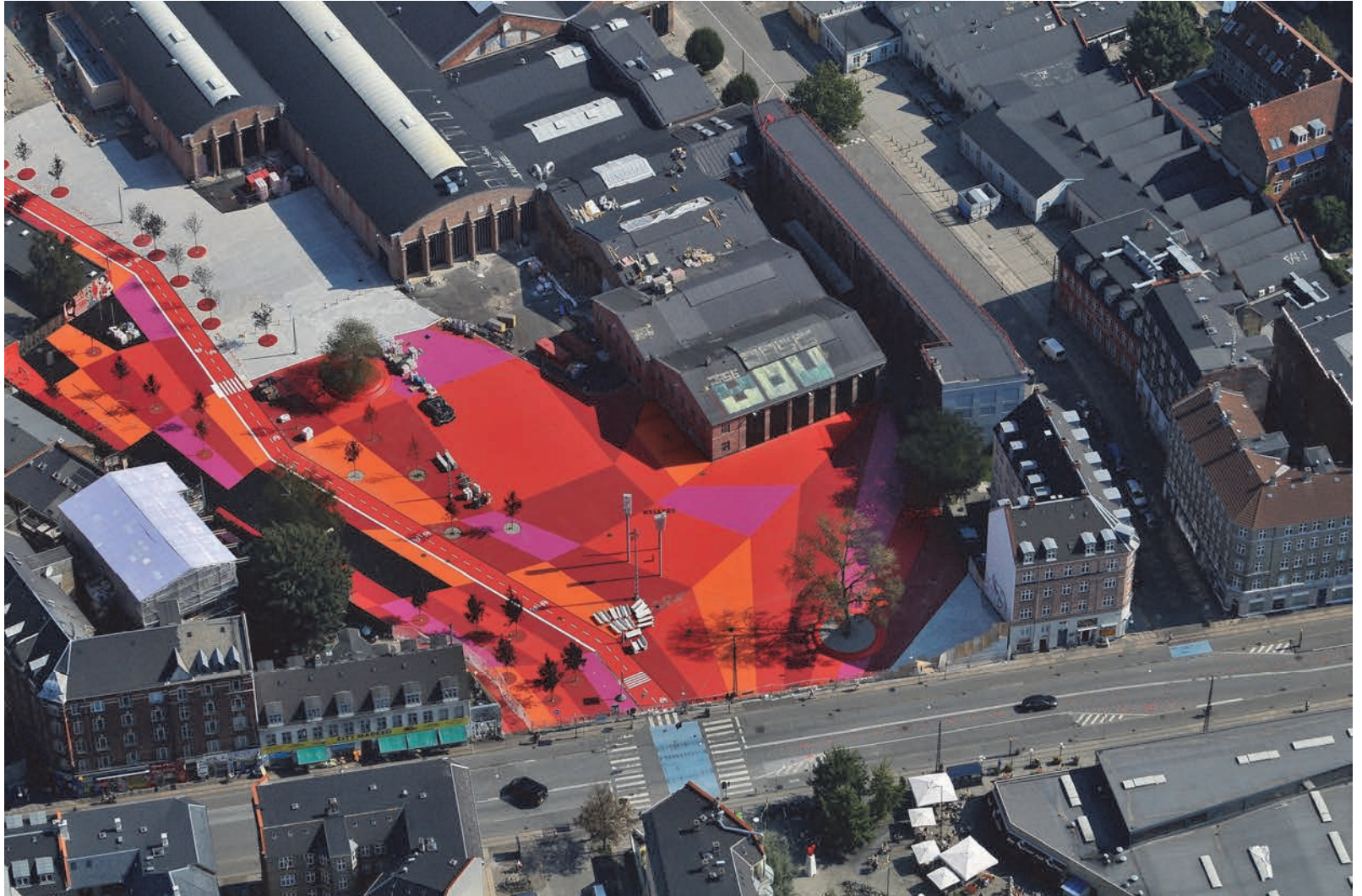


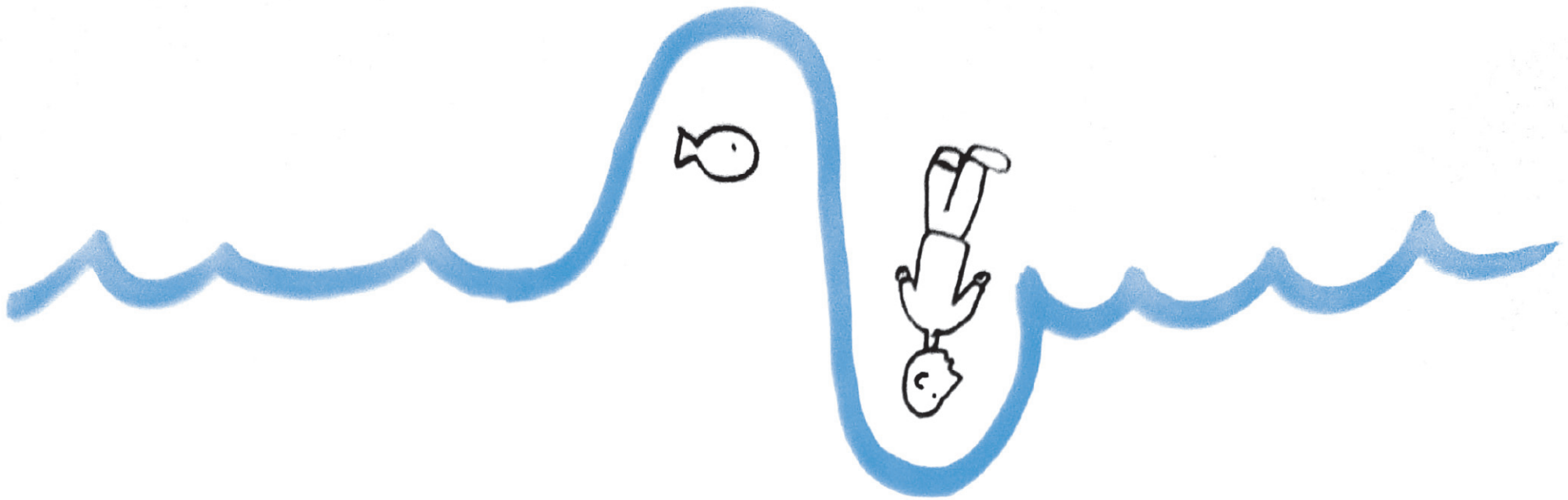
SUPERFLEX/

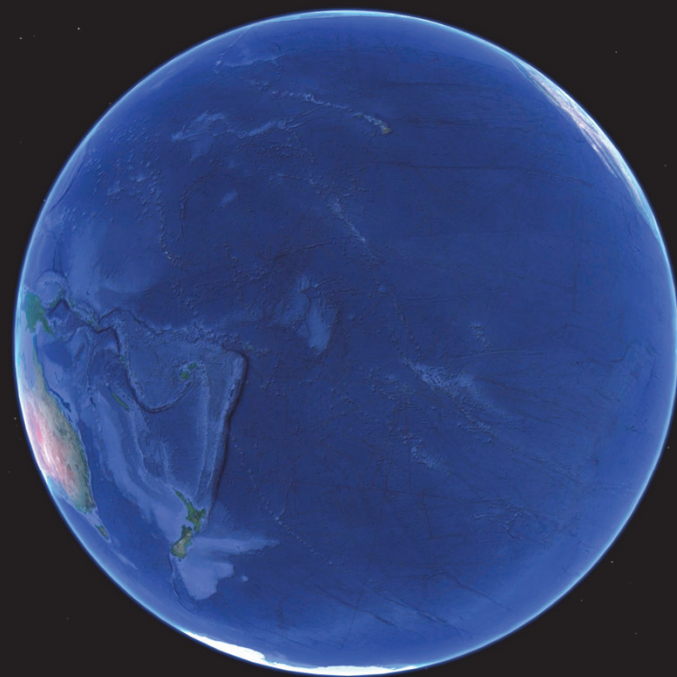
Superkilen
Copenhagen, 2012





SUPERREV
A NEW KIND OF URBANISM





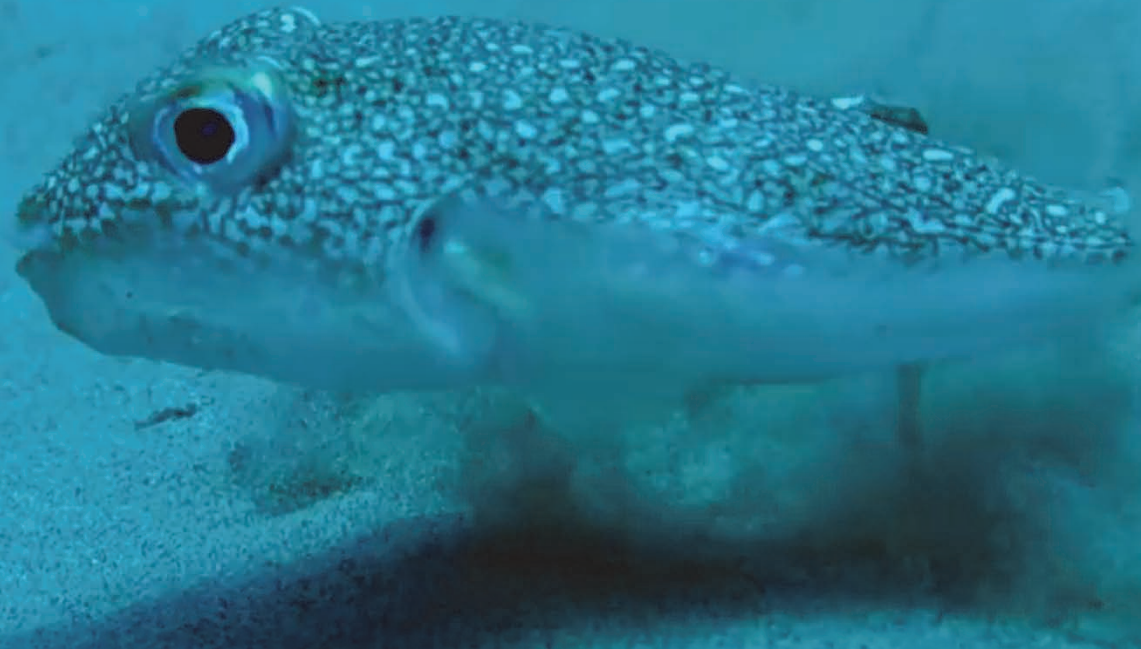
FUTURE SCENARIO



LIVE TOGETHER



BBC one

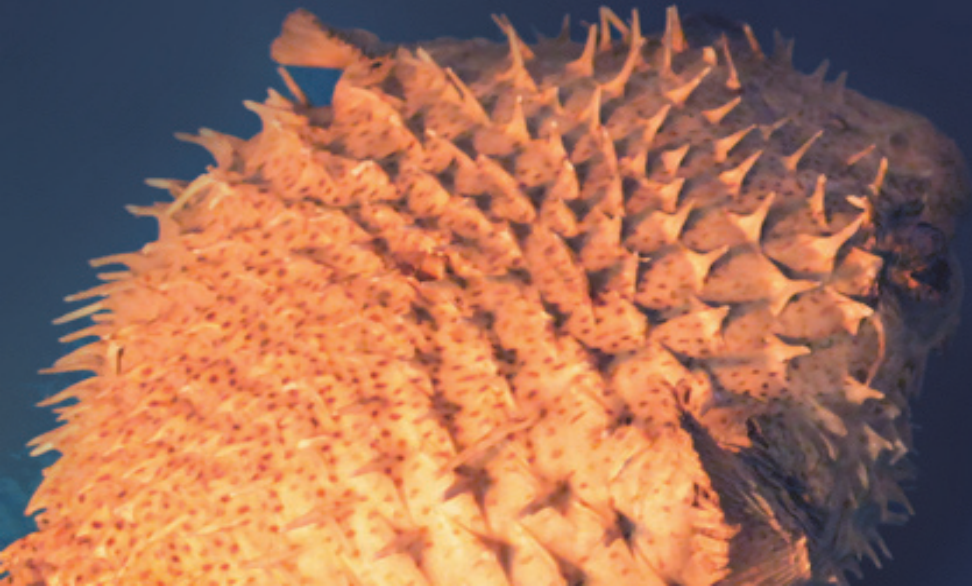


UNDERSTAND THE CLIENT

Who are you?

What do you dream about?

What kind of cities would you like
to see when you arrive?





Dr. Alex Jordan
Department of Collective Behavior
Max Planck Institute, Konstanz



Labroides dimidiatus
Bluestreak Cleaner Wrasse

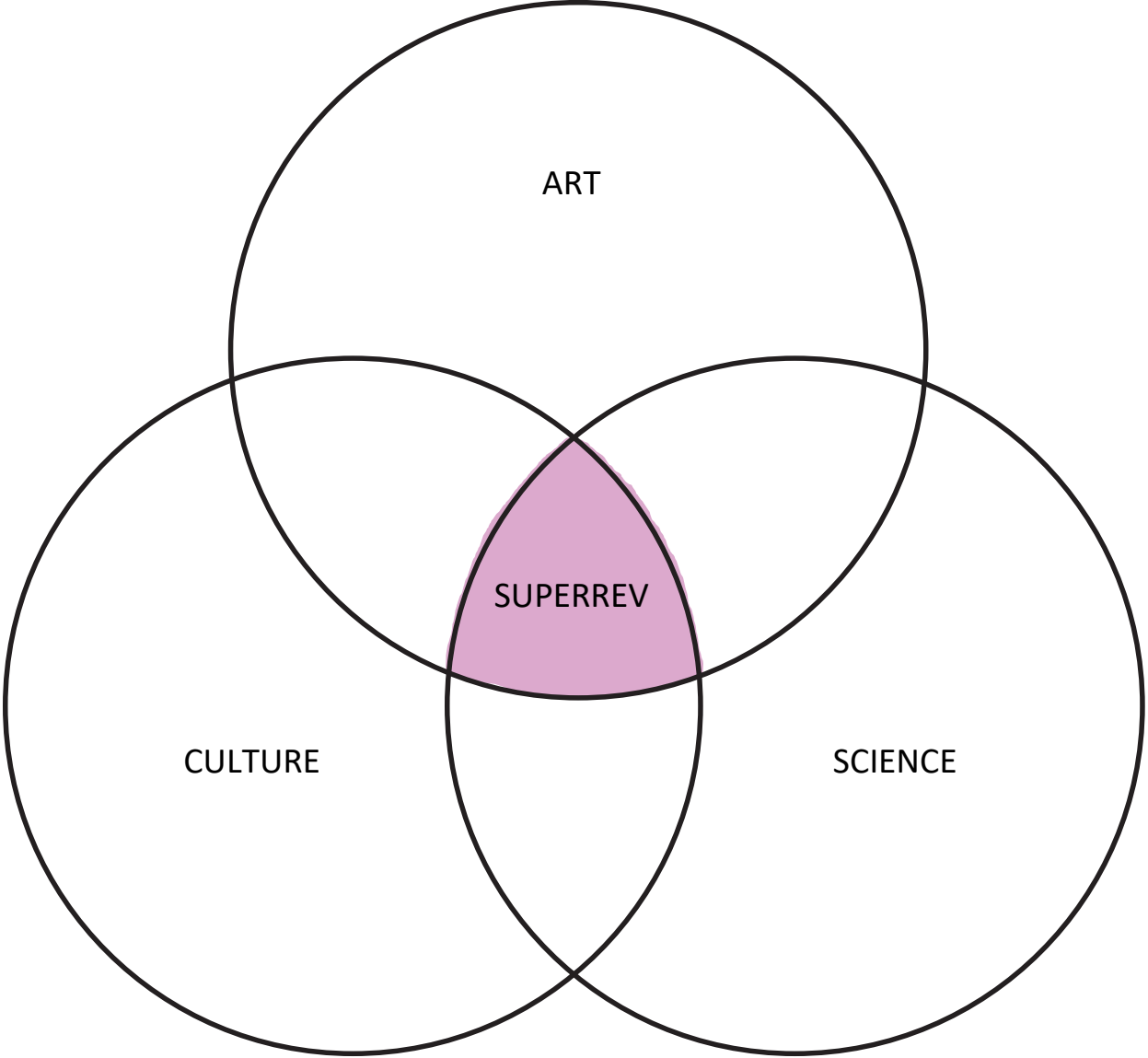
A photograph of two blue tang fish swimming in an aquarium tank. The fish are positioned in the center of the frame, facing each other. The background is filled with various types of coral and sea anemones, creating a complex, textured environment. The lighting is somewhat dim, highlighting the vibrant blue and yellow colors of the fish and the diverse colors of the coral.

SUPPLEMENTARY VIDEO

“If a fish can pass the mark test, what are the implications for consciousness and self-awareness testing in animals?”

Kohda, Hotta, Takeyama, Awata, Tanaka, Asai, Jordan

PLOS BIOLOGY

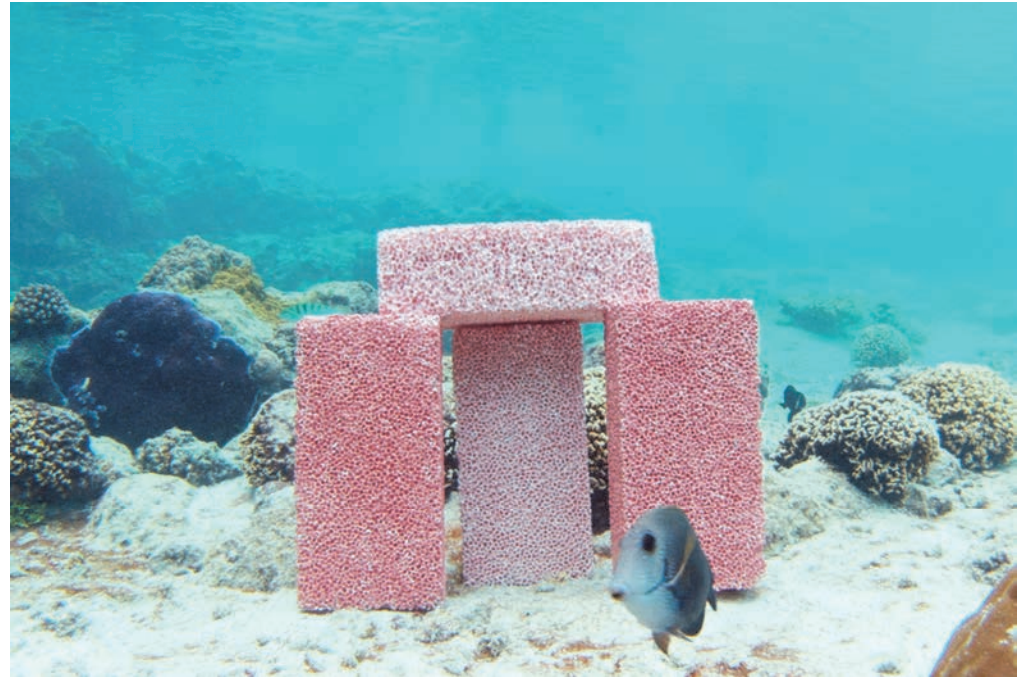


ART

Dive In at DESERT X, Coachella Valley, 2019

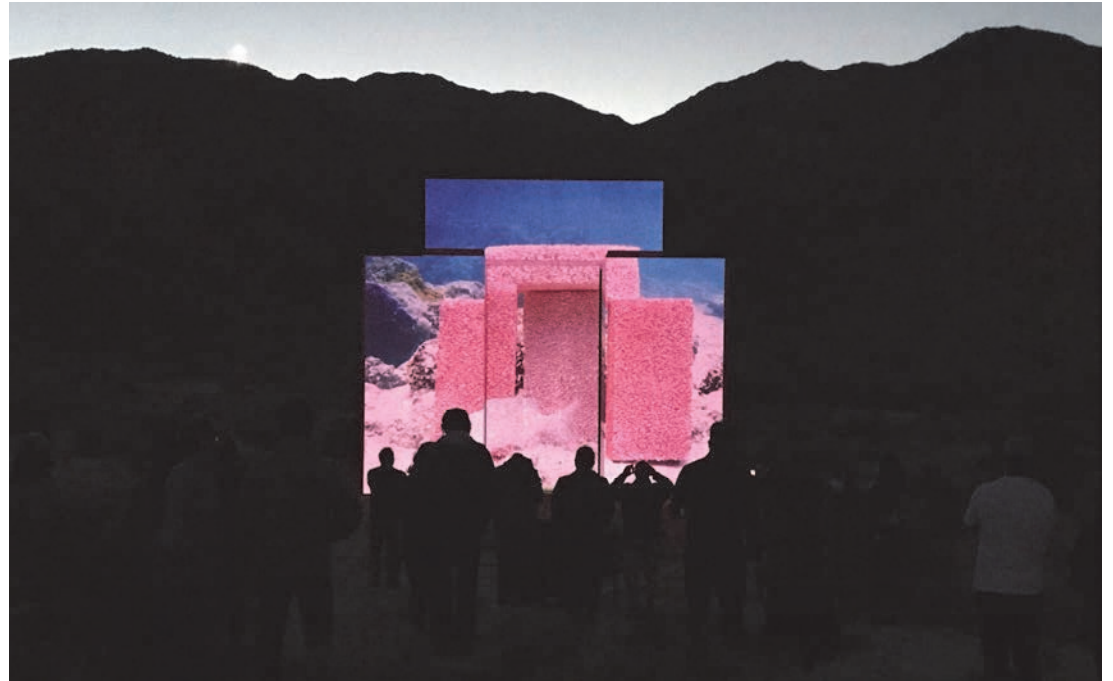


Dive In, Tonga, South Pacific, 2019



CULTURE

Dive In at DESERT X, Coachella Valley, 2019

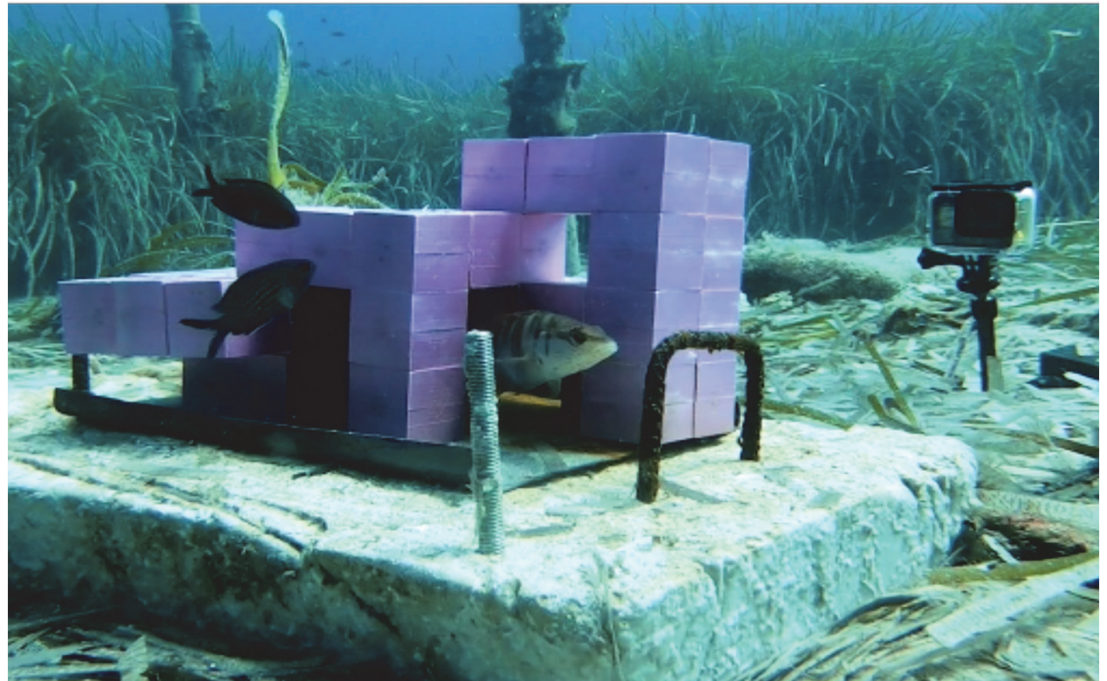


SCIENCE

Alligator Head Foundation, Jamaica, 2019



Pink Structure at STARESO Marine Institute, Corsica, 2021



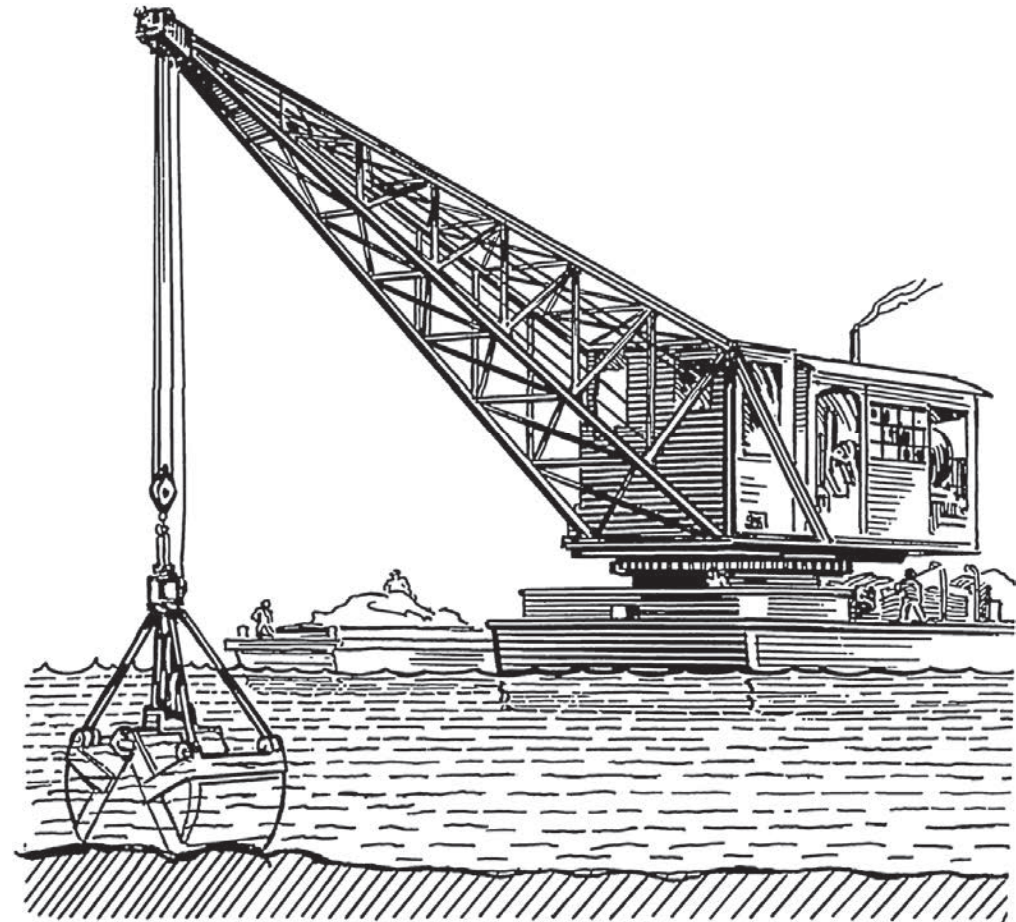
Kelp-a-Cola SUPERREV



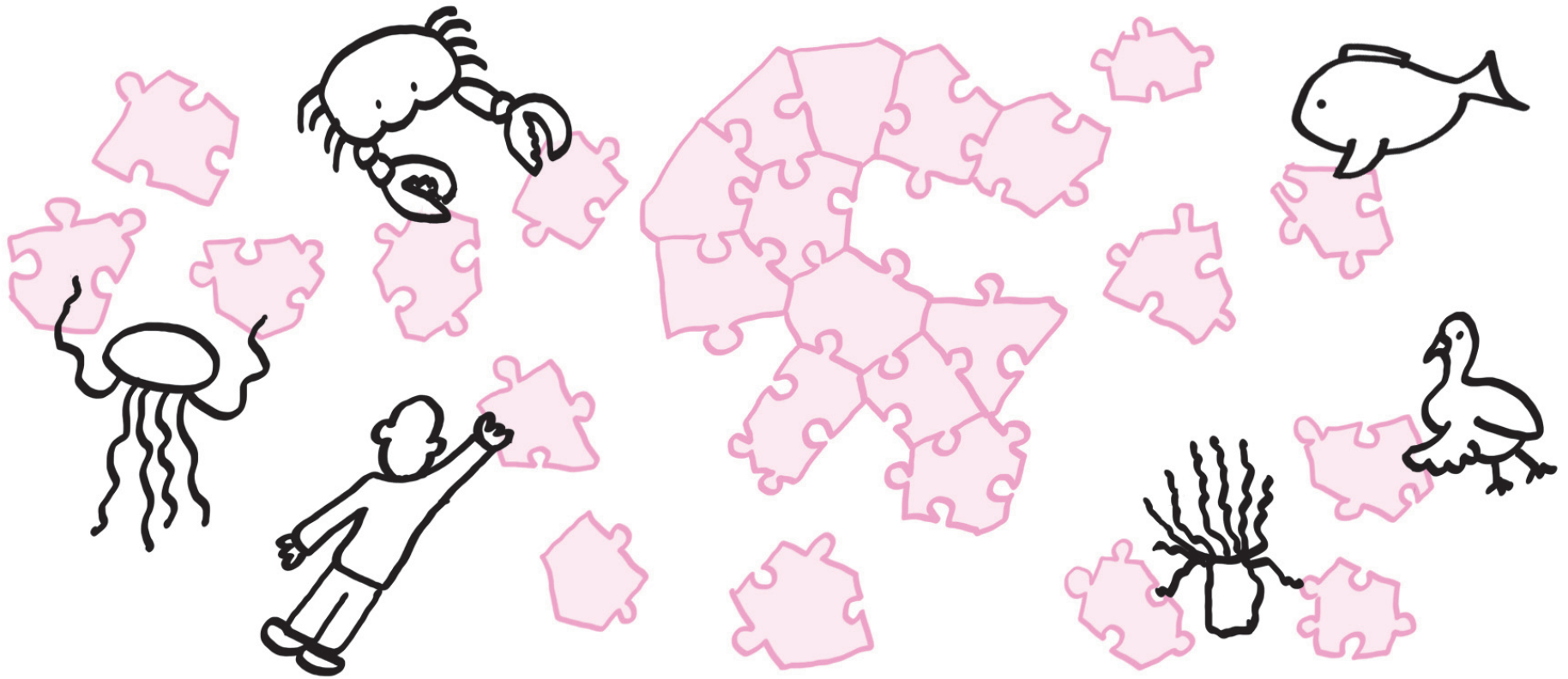




STENFISKERI

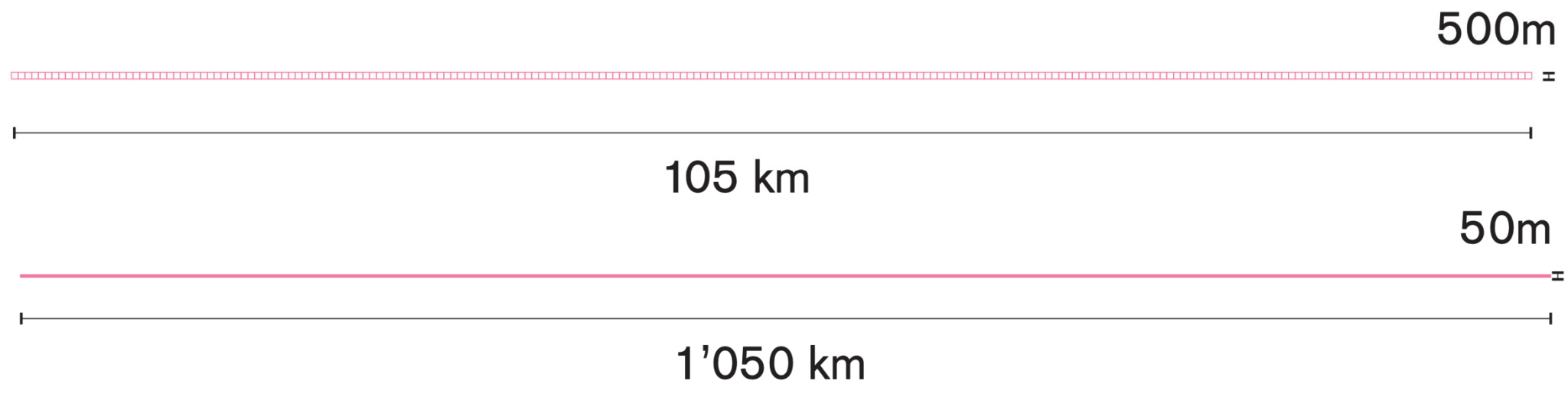
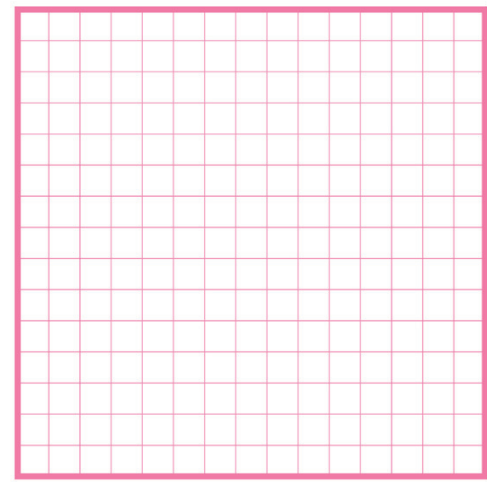
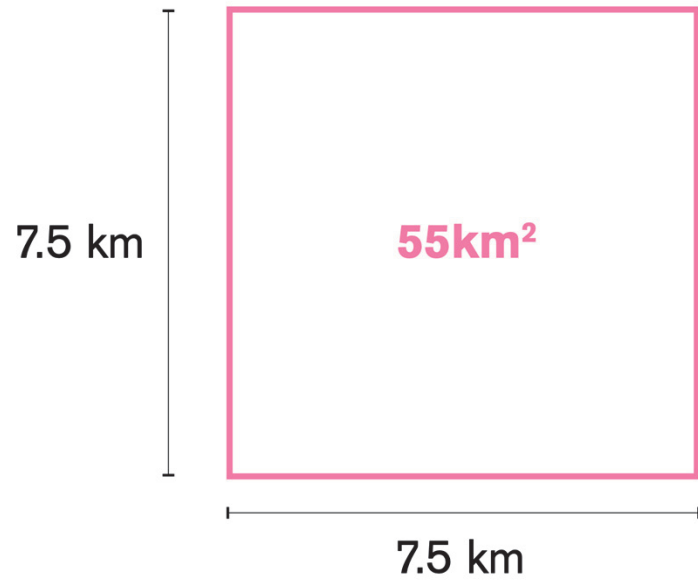


INTERSPECIES LIVING





55km²







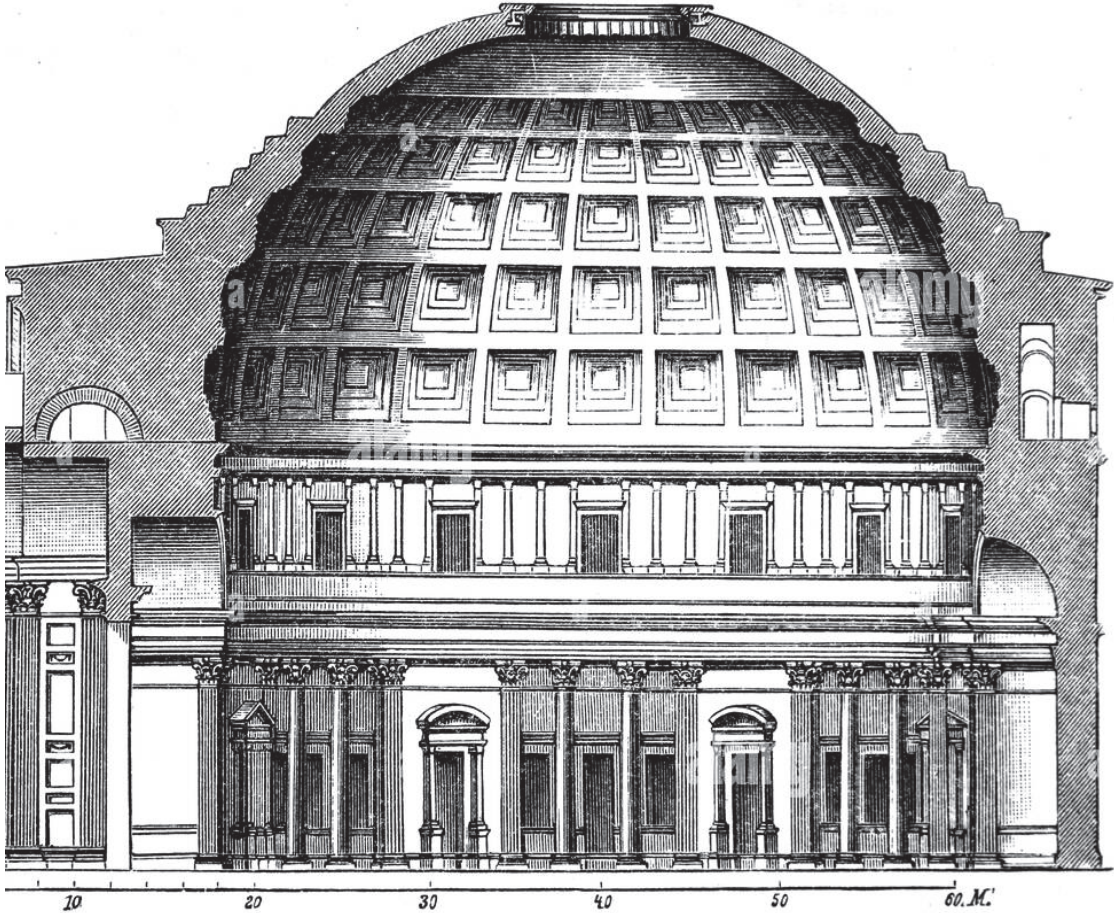


WHY CONCRETE?





Pantheon Rome 113–125 AD

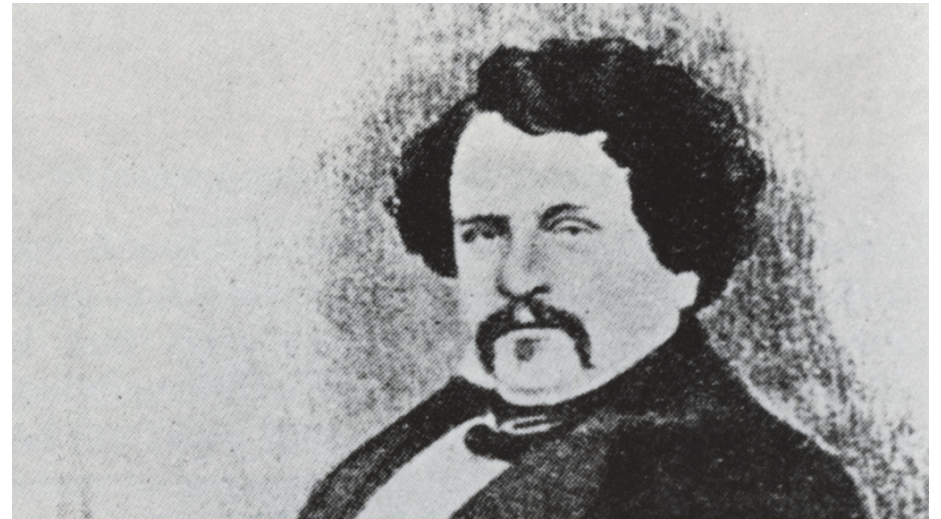


François Hennebique / 1842–1921



BÉTON ARMÉ

Joseph Aspdin / 1778–1855



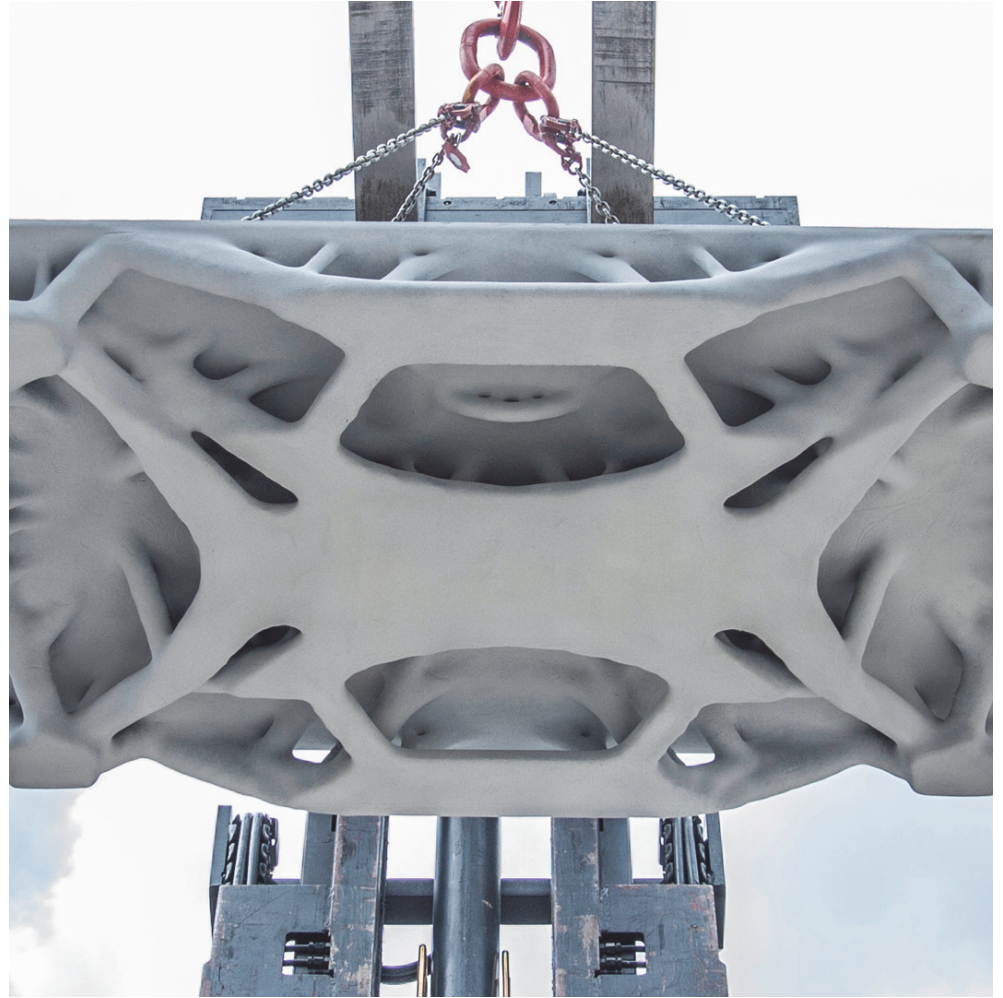
PORTLAND CEMENT



Álvaro Siza Vieira's pavillon built for the 1998 Lisbon World Exposition



Aircraft Hangars at Orvieto Airport by Pier Luigi Nervi, 1938



An underwater photograph featuring a pink, geometric sculpture composed of three stacked, faceted blocks. The sculpture is positioned on the right side of the frame. The background is a deep teal-green water with sandy seabed and some seaweed. The text is overlaid on the left side of the image.

SUPERREV A NEW KIND OF URBANISM

Thank you!

Zeno Riz á Porta / Head of Research and Design Development / SUPERFLEX