

Tabte og kommende rev i Nordsøen:

Kan havmøllers fundamenter fungere som naturbaserede løsninger?

Jon C. Svendsen

Seniorforsker

Email: jos@aqua.dtu.dk

THE VELUX FOUNDATIONS

VILLUM FONDEN ✕ VELUX FONDEN



Miljøministeriet
Miljøstyrelsen



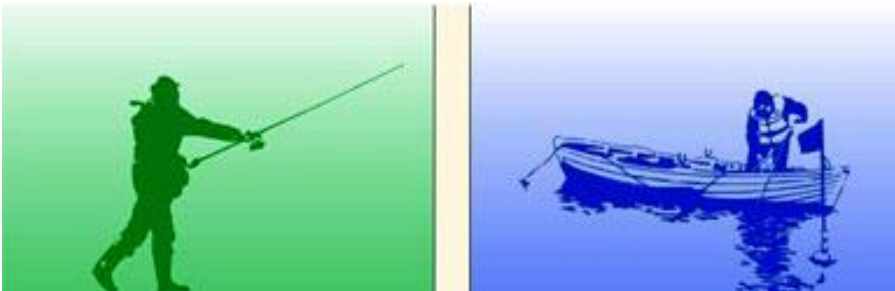
**Ministeriet for Fødevarer,
Landbrug og Fiskeri**
Fiskeristyrelsen

VATTENFALL

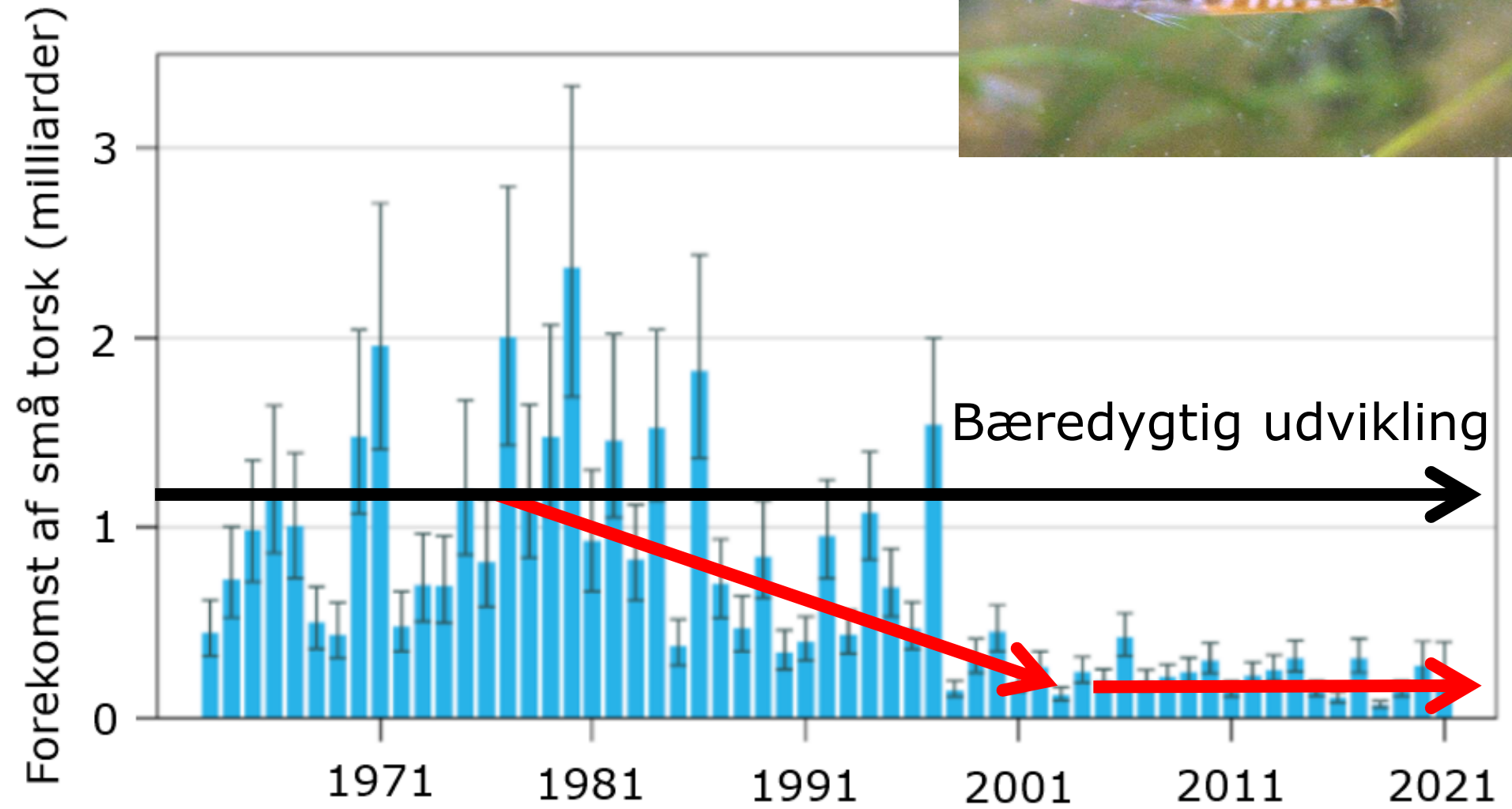


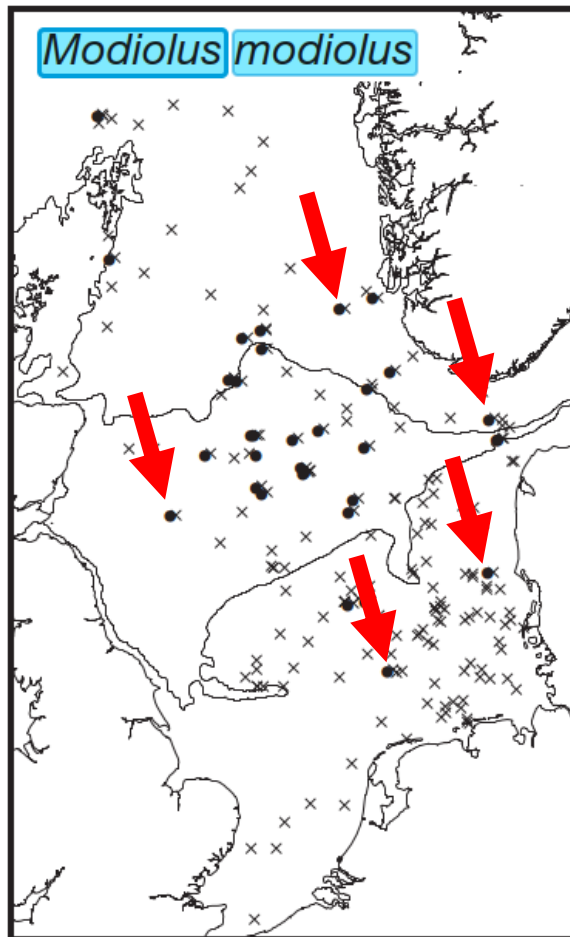
Den Europæiske Union
Den Europæiske Hav- og Fiskerifond

HAV & FISK

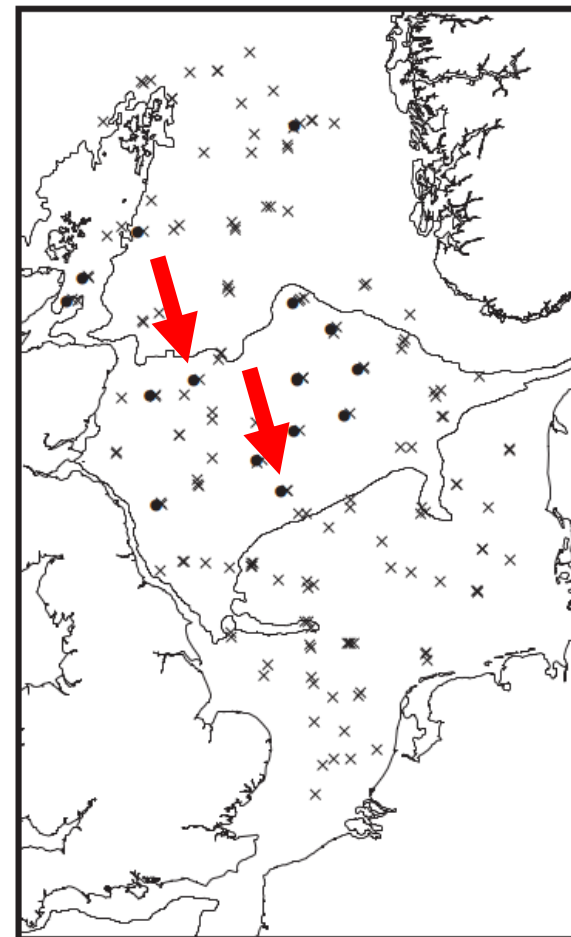


Torsk i Nordsøen

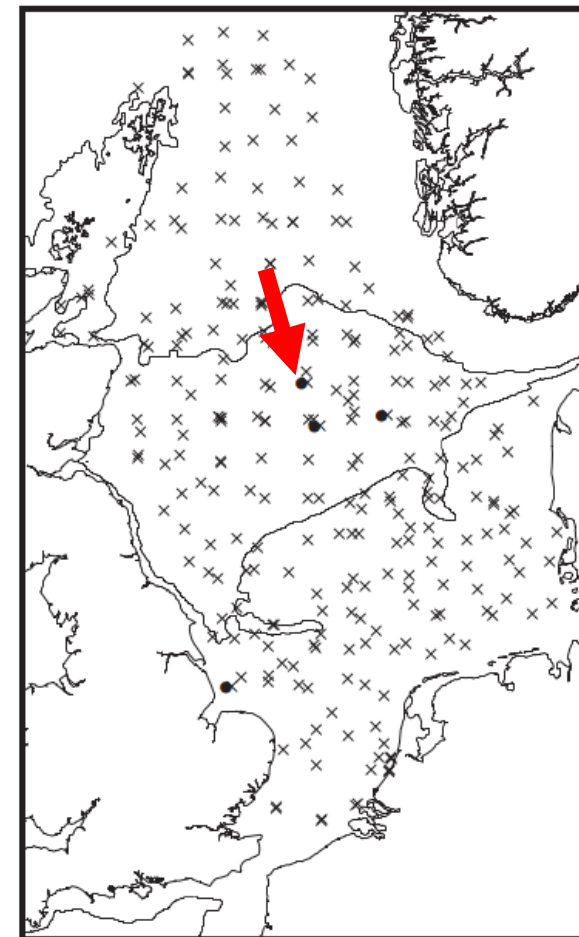




1912



1985

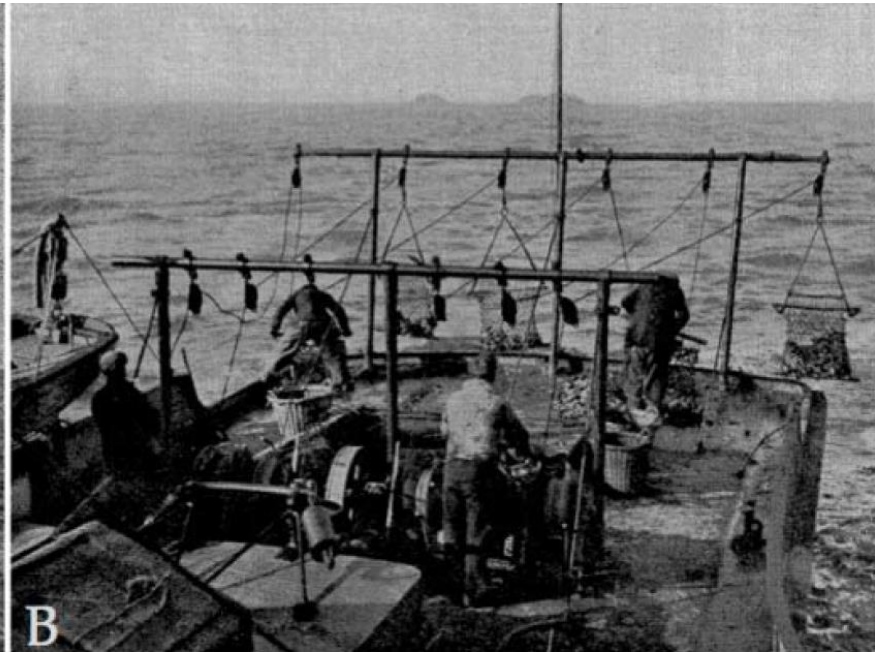
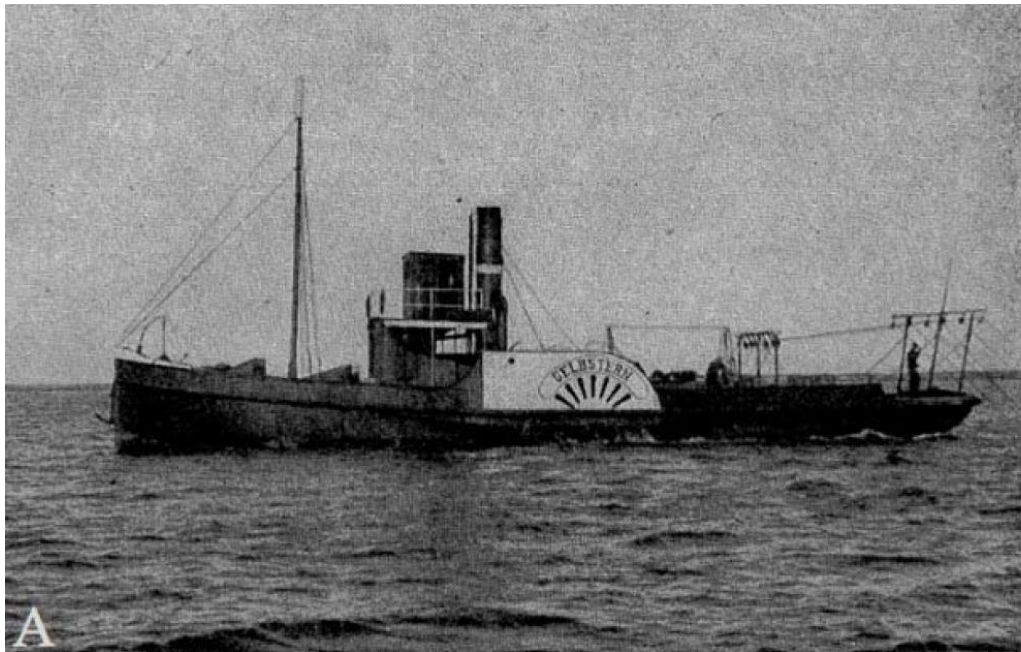


2000

Callaway et al. 2007



Områder på 35.000 km² med østers i Nordsøen indtil omkring 1900



Der er skrabet meget efter østers for omkring 100 år siden

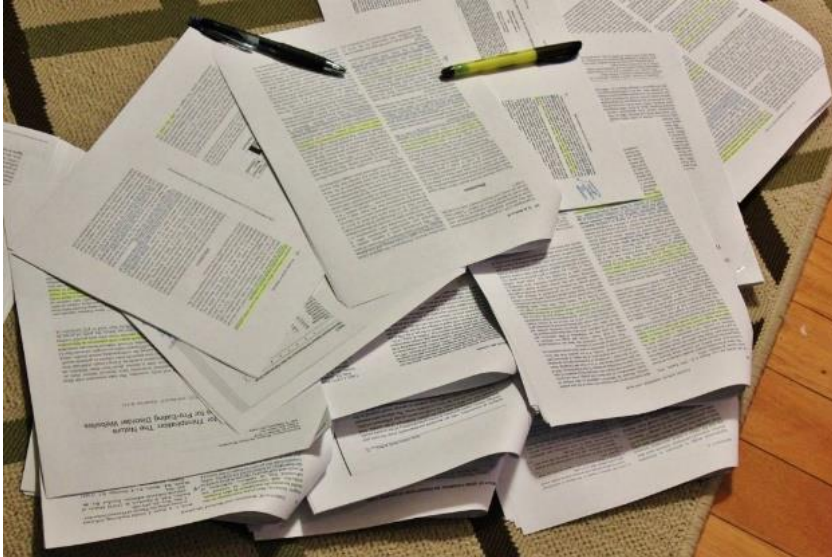


Store områder, der minder om rev, er formodentligt blevet fjernet

Det betyder tabte levesteder for fisk og mange andre organismer.



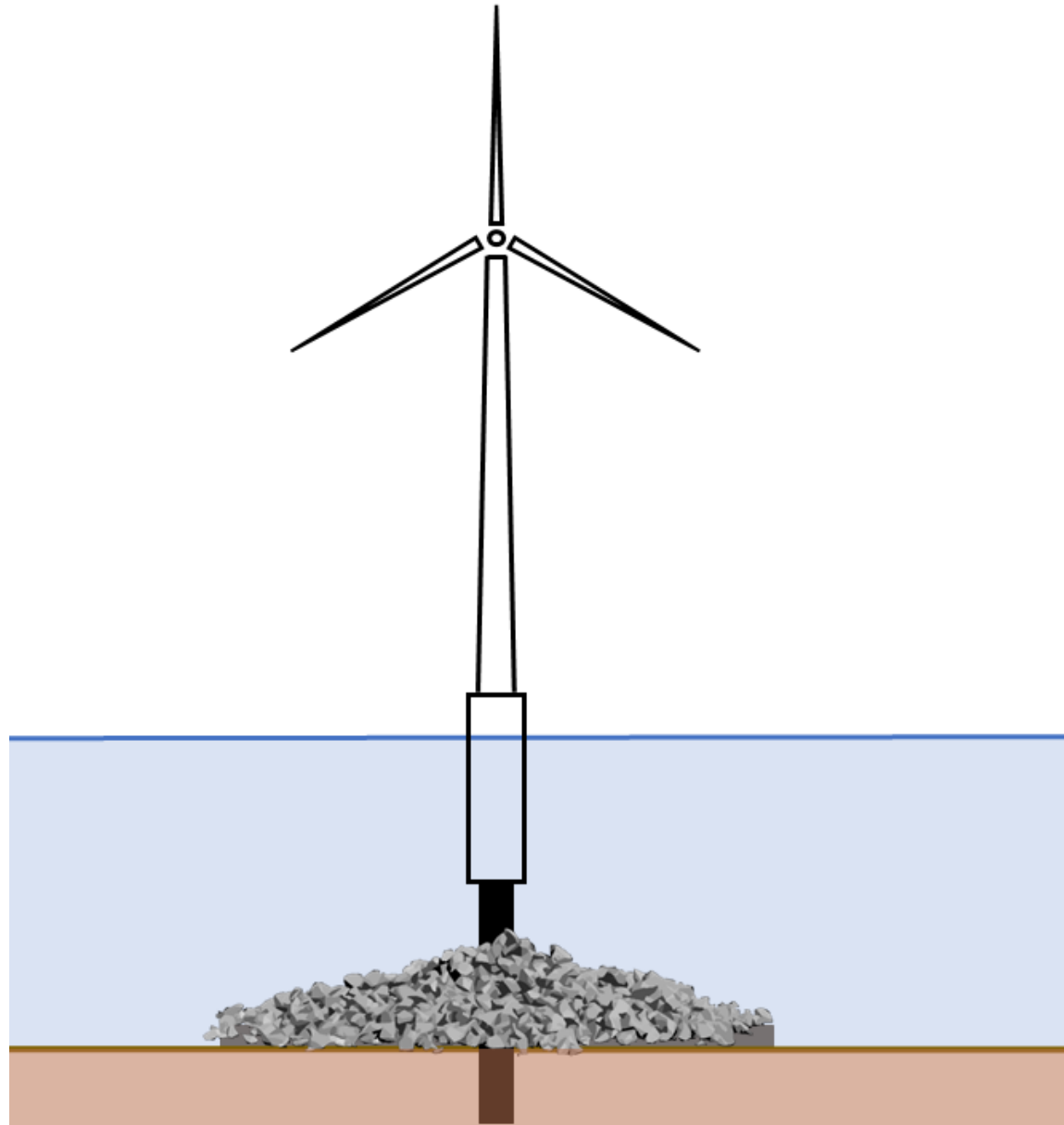
Fungerer havmøller som kunstige rev?



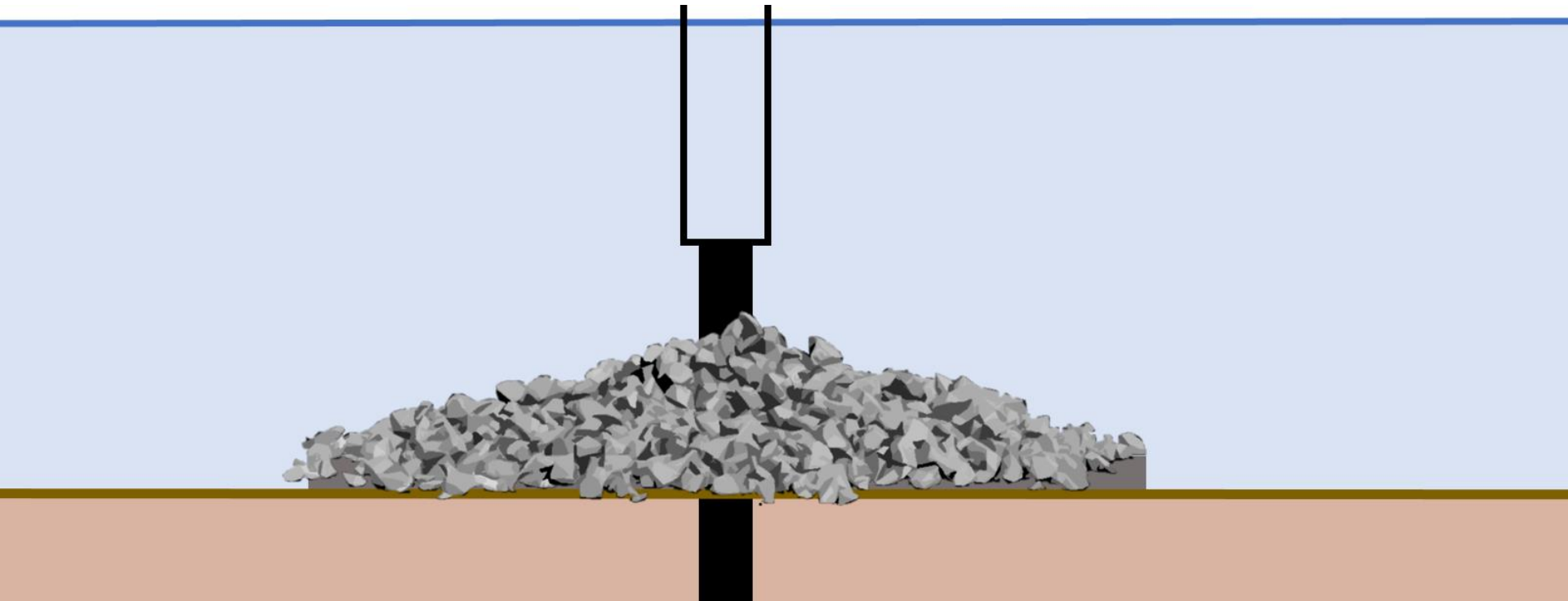
Review

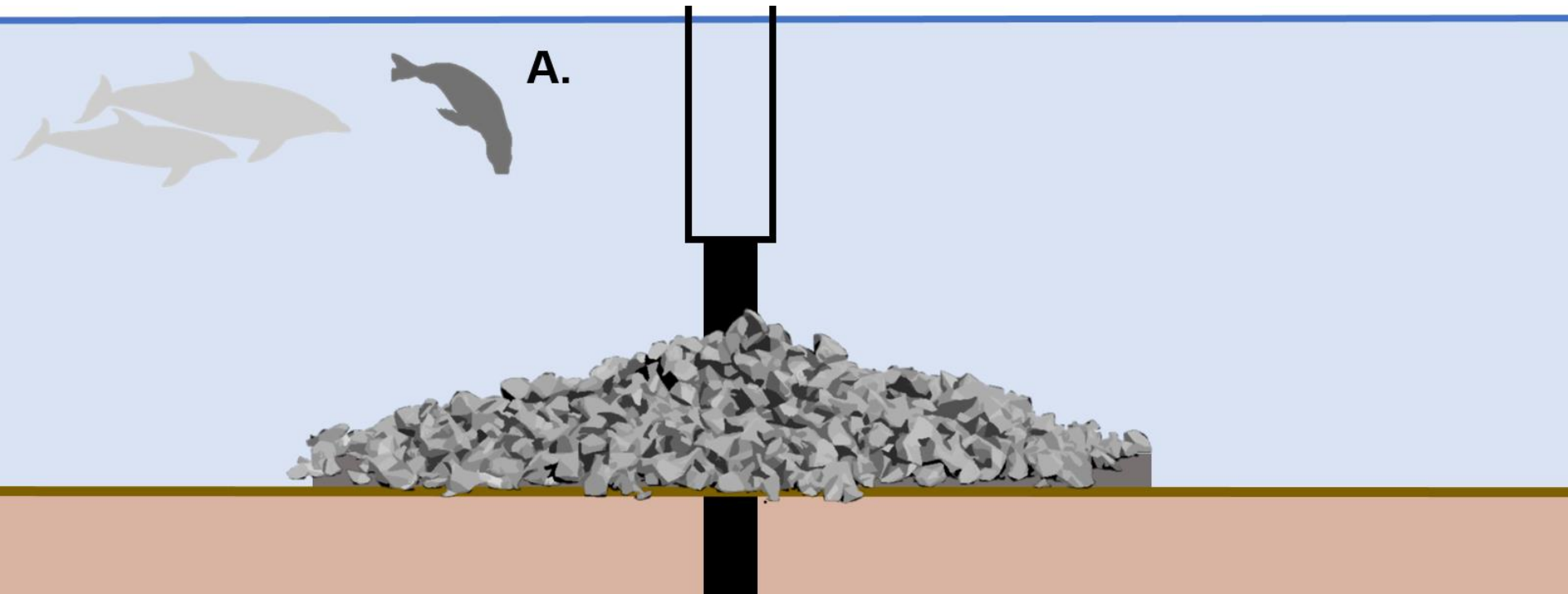
Using Artificial-Reef Knowledge to Enhance the Ecological Function of Offshore Wind Turbine Foundations: Implications for Fish Abundance and Diversity

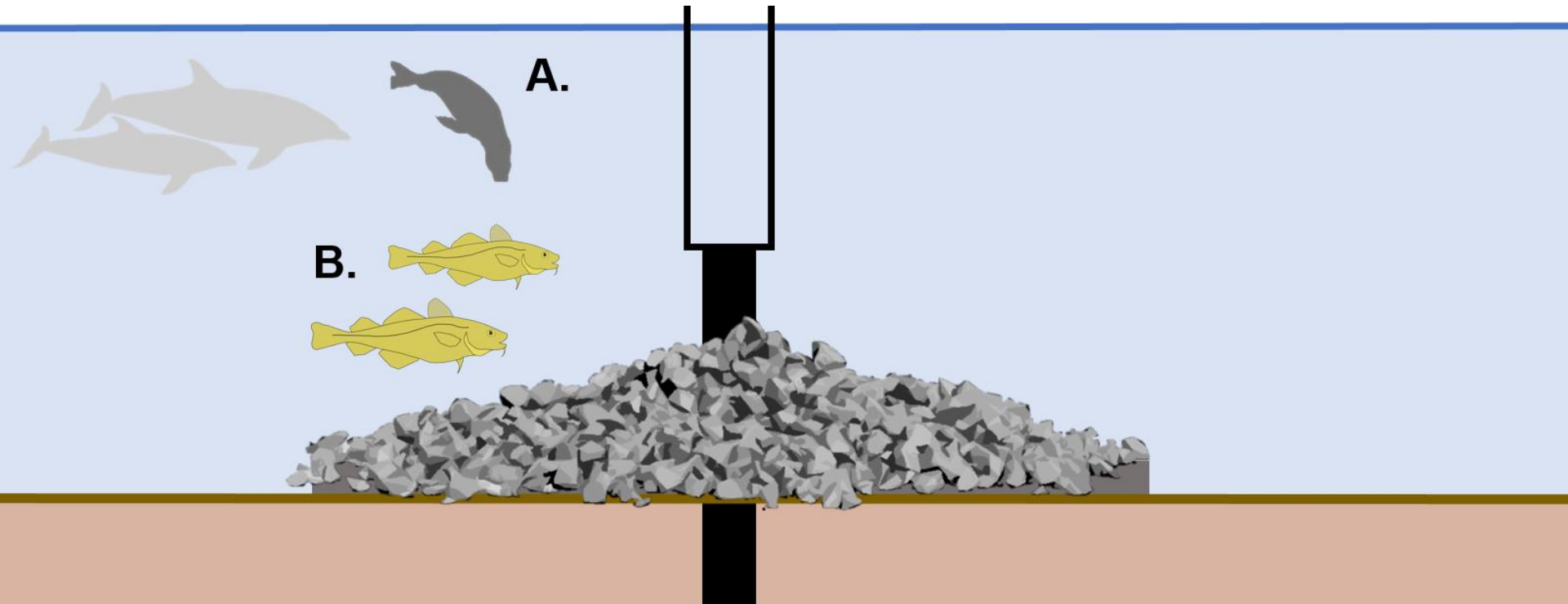
Maria Glarou ^{1,2,*}, Martina Zrust ¹ and Jon C. Svendsen ¹

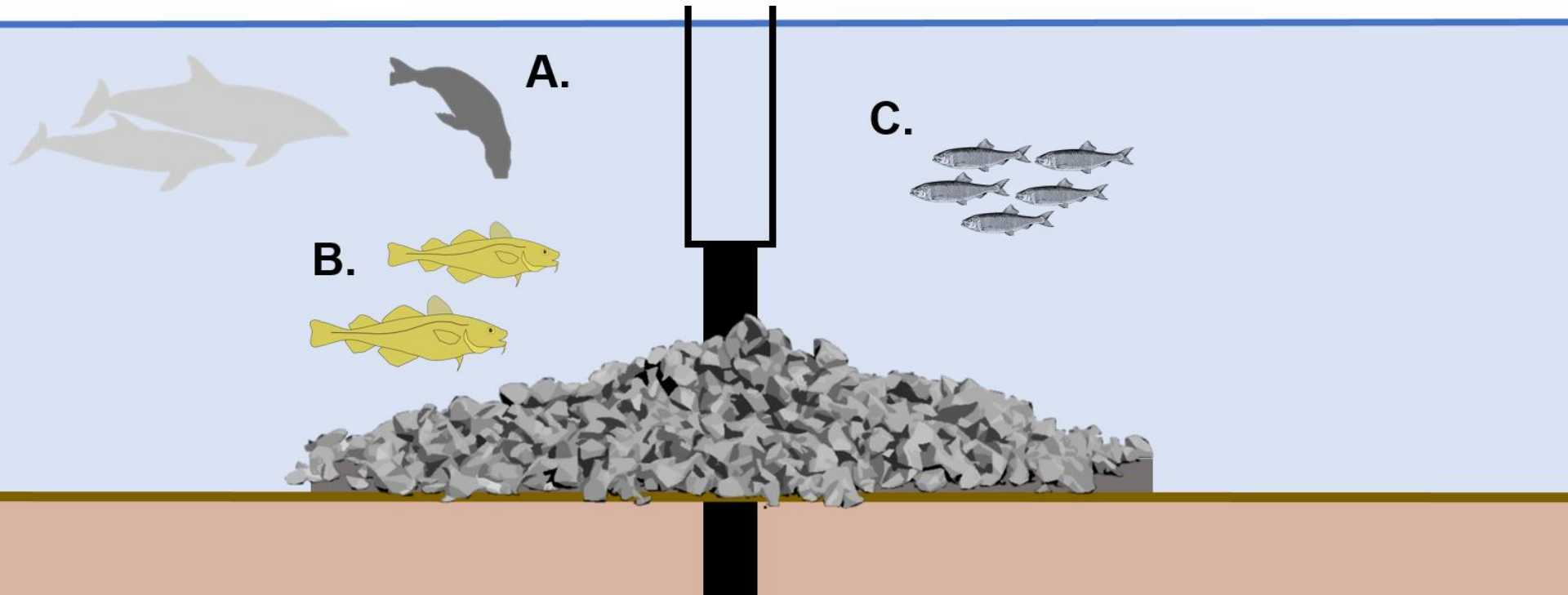


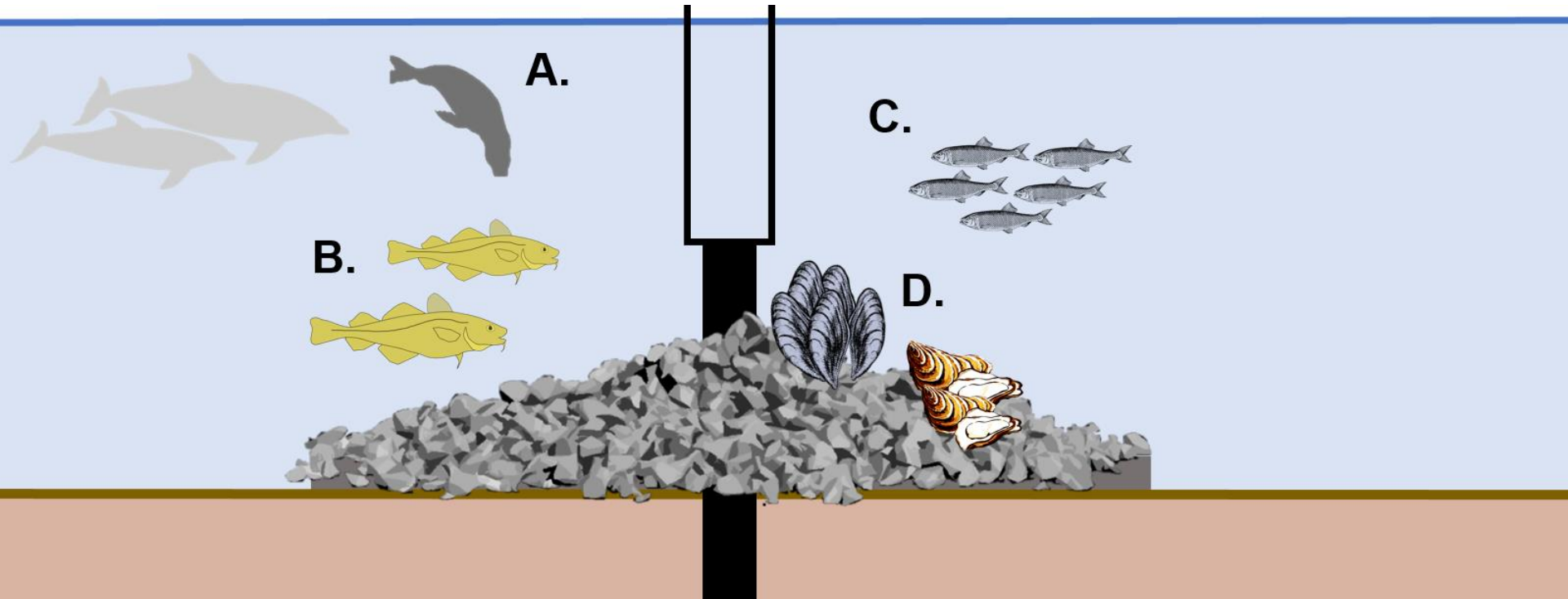


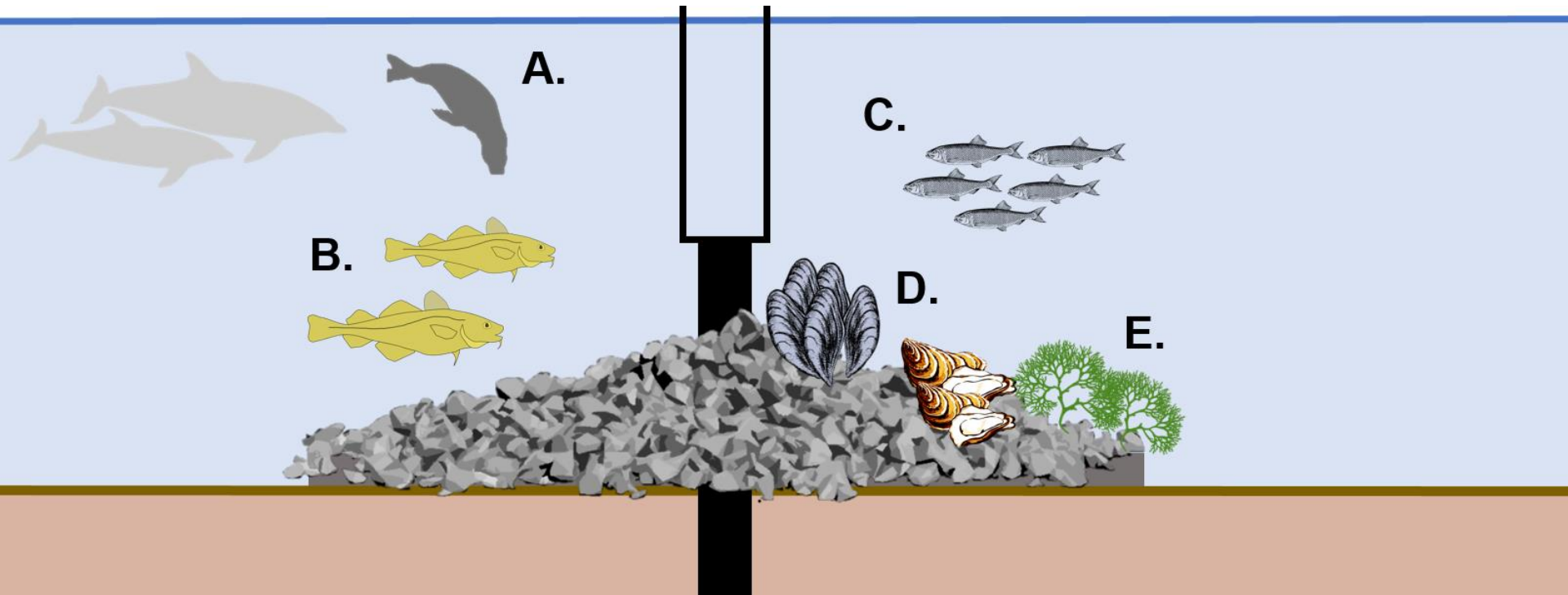


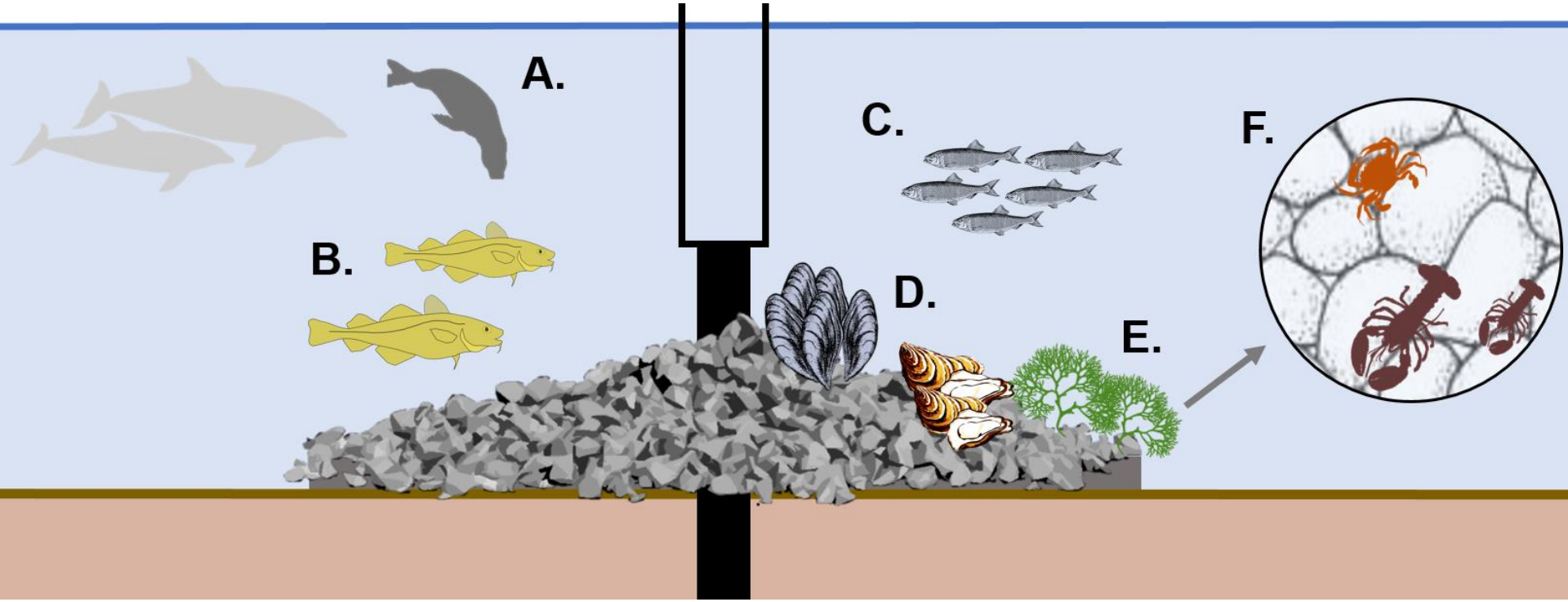


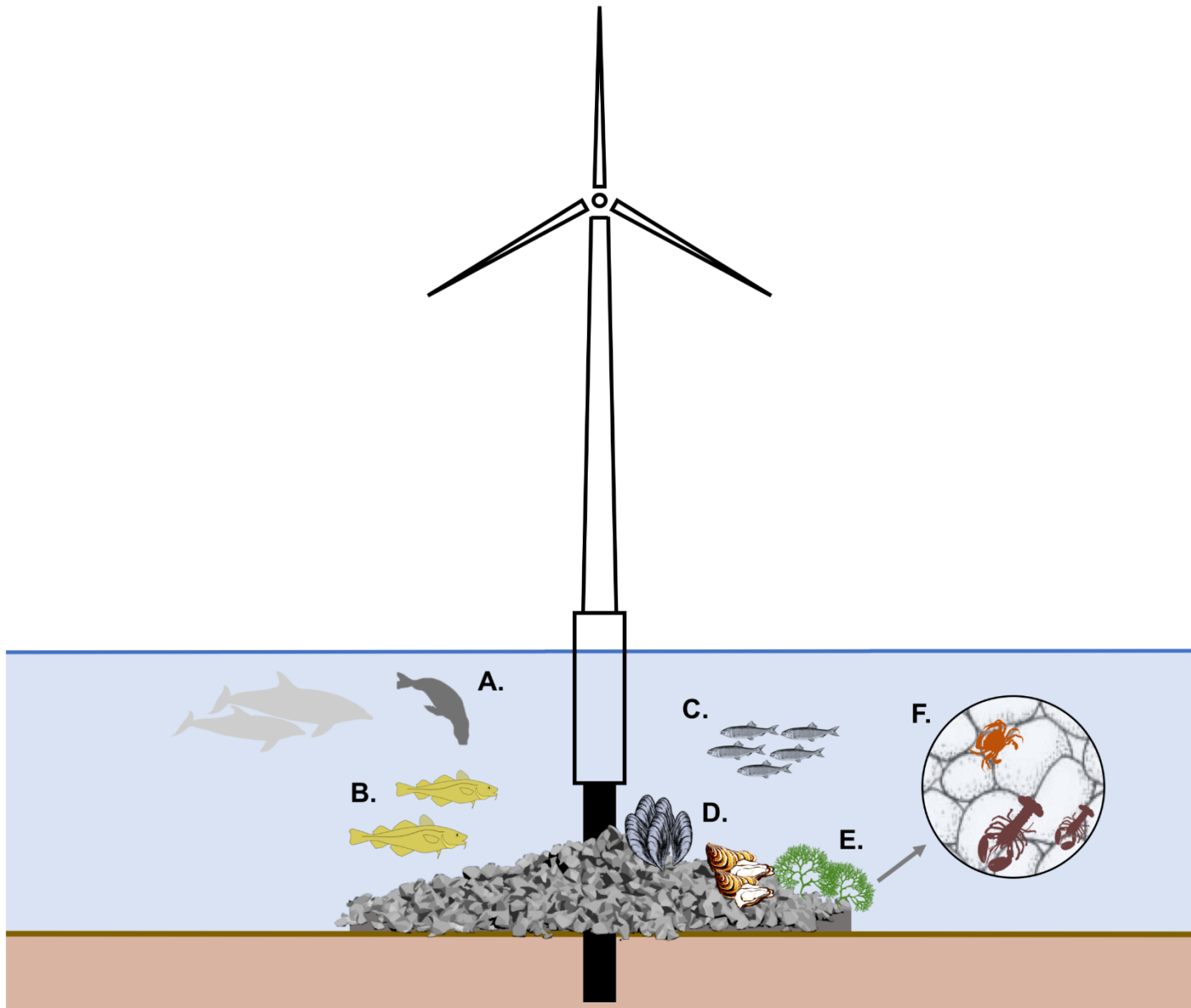














Fiskevenligt design af fundamenter til havvindmøller

Fisk og skaldyr Økosystemer Vindenergi



Skibe og off-shore-konstruktioner

TORSDAG 09 JUL 20 | Af Helle Falborg

Med de rigtige metoder kan vindmøllefundamenter på havbunden formentlig gavne både fisk, skaldyr, vegetation og havpattedyr.

Kontakt

Jon Christian Svendsen

Seniorforsker
DTU Aqua

93 51 16 63



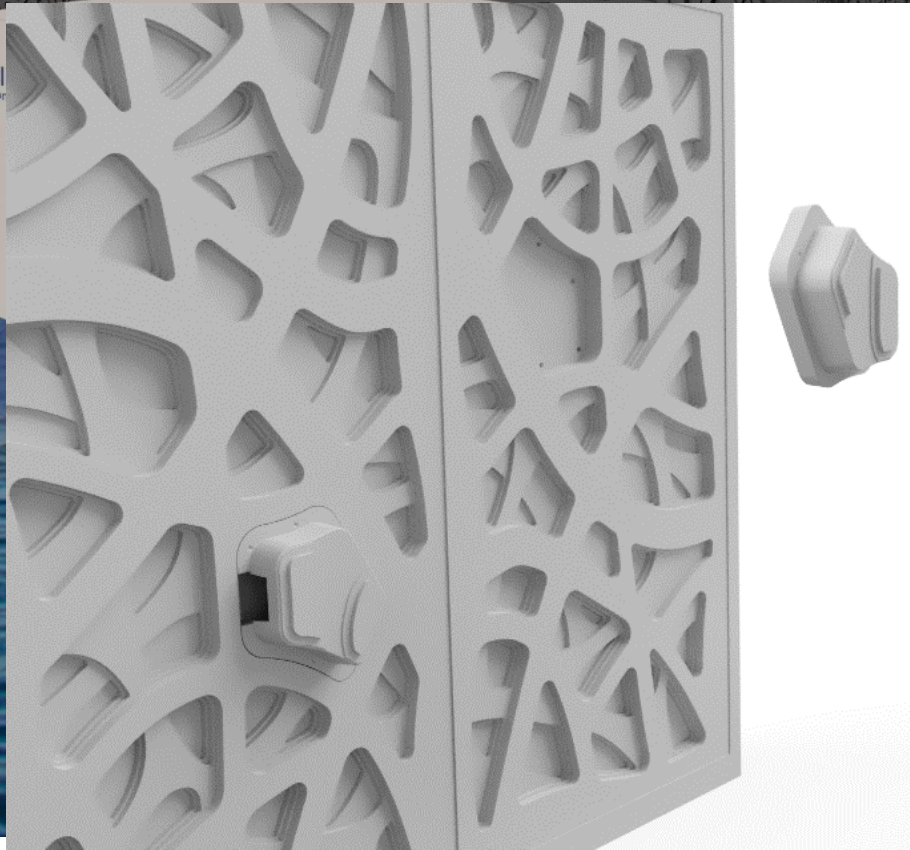
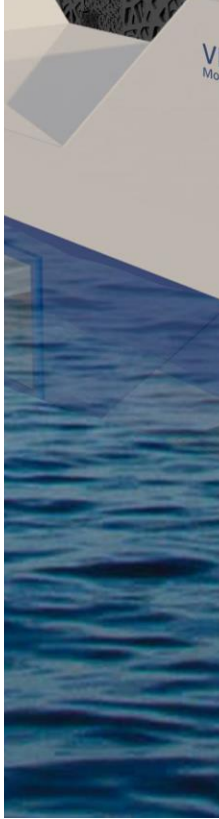
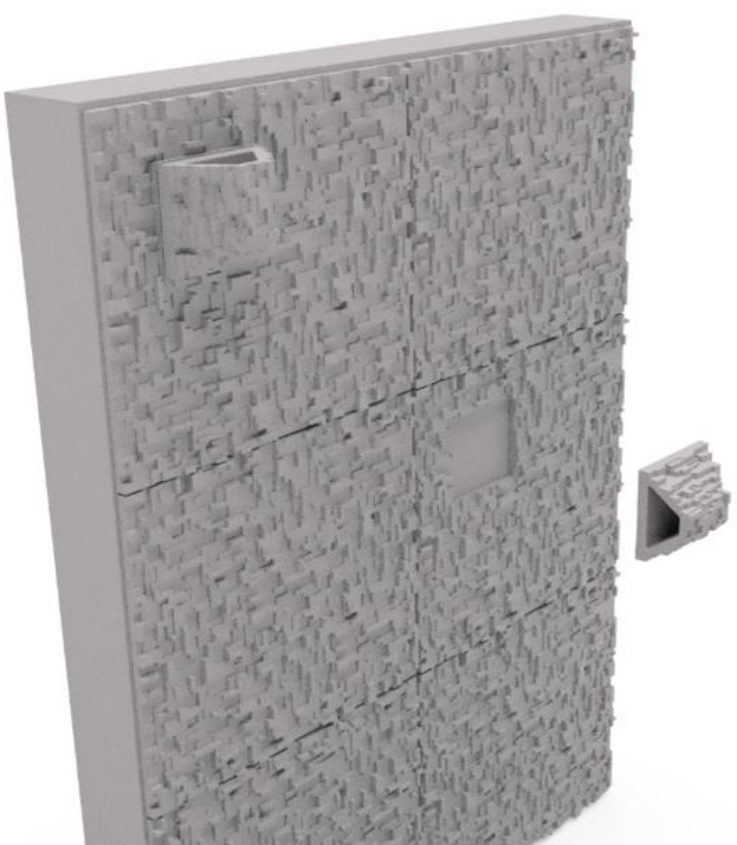
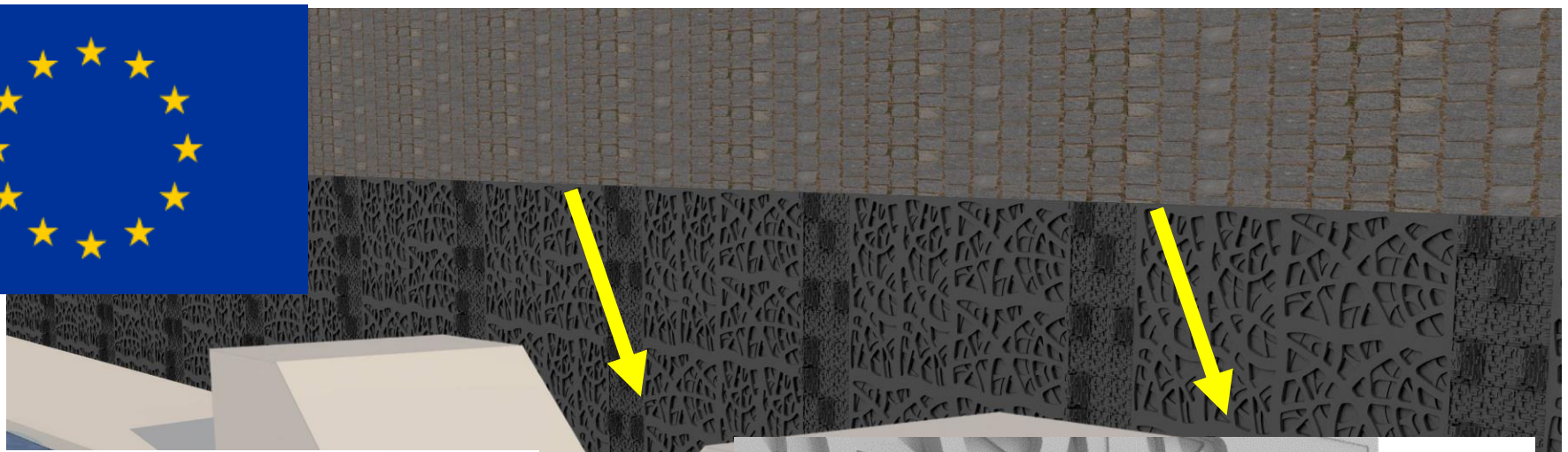


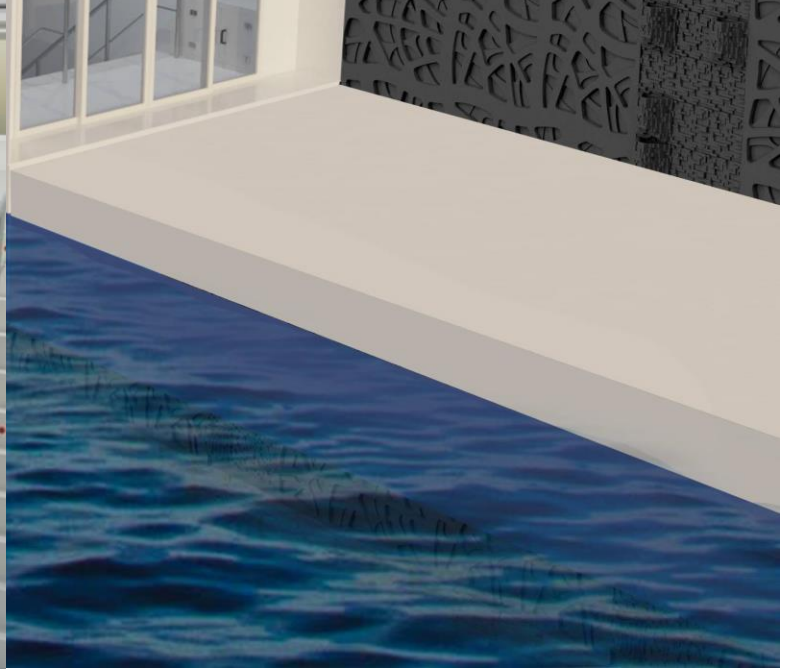
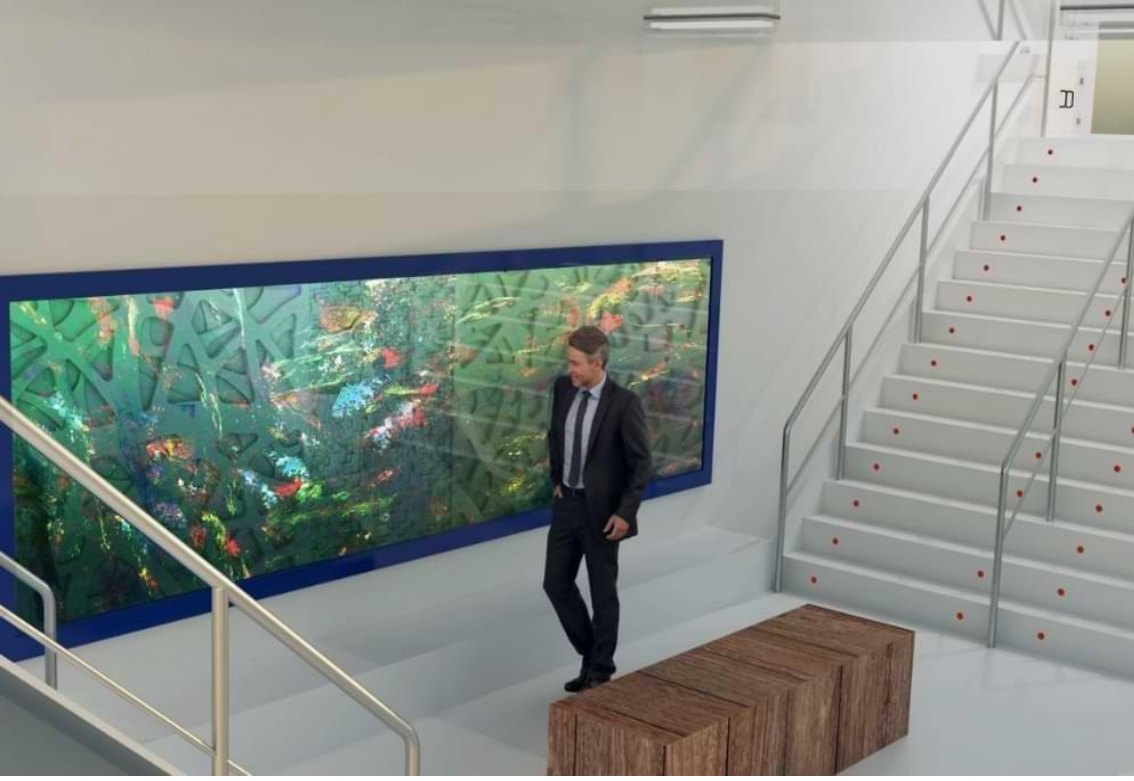
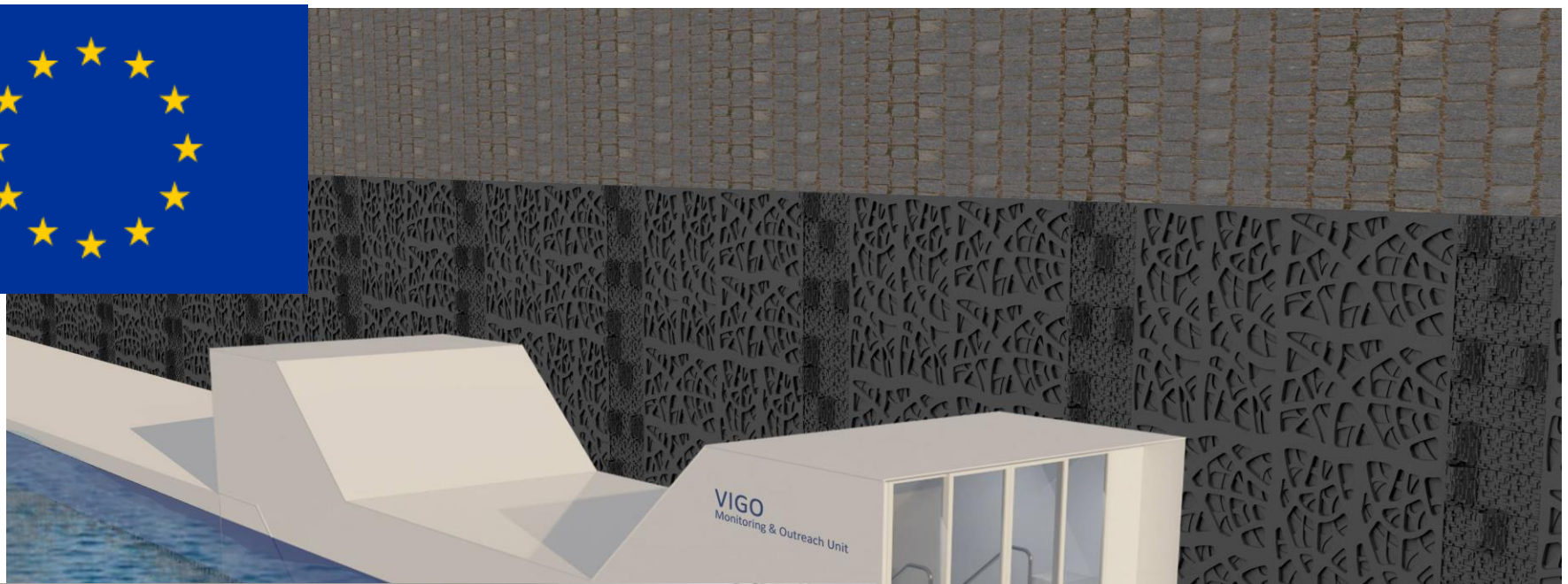
?

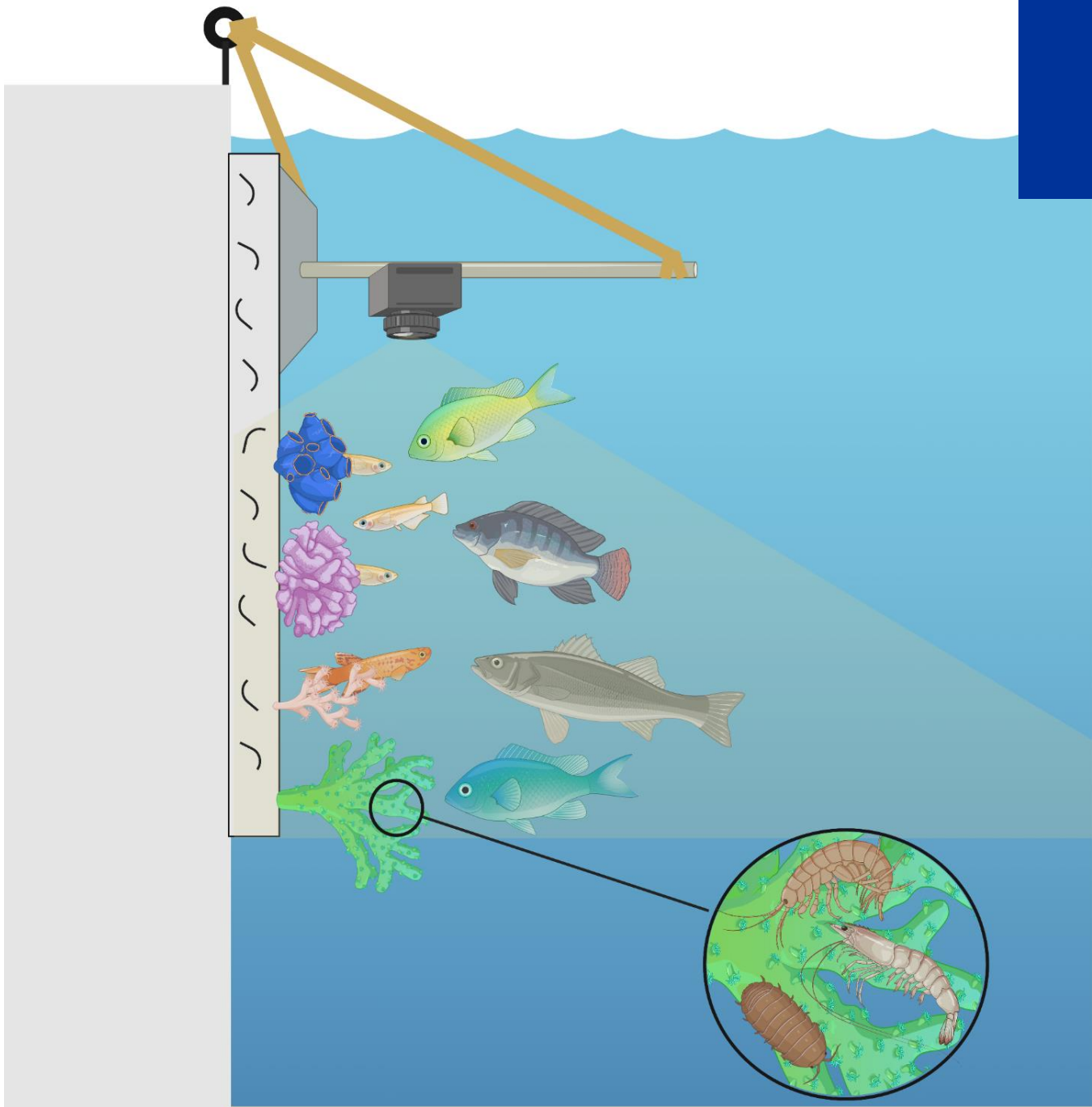


Vigo











The Living Ports Project

Catalyzing groundbreaking concrete
infrastructure technology

#IAPH2022 SUSTAINABILITY AWARDS



INFRASTRUCTURE

WINNER 2022

Port of Vigo

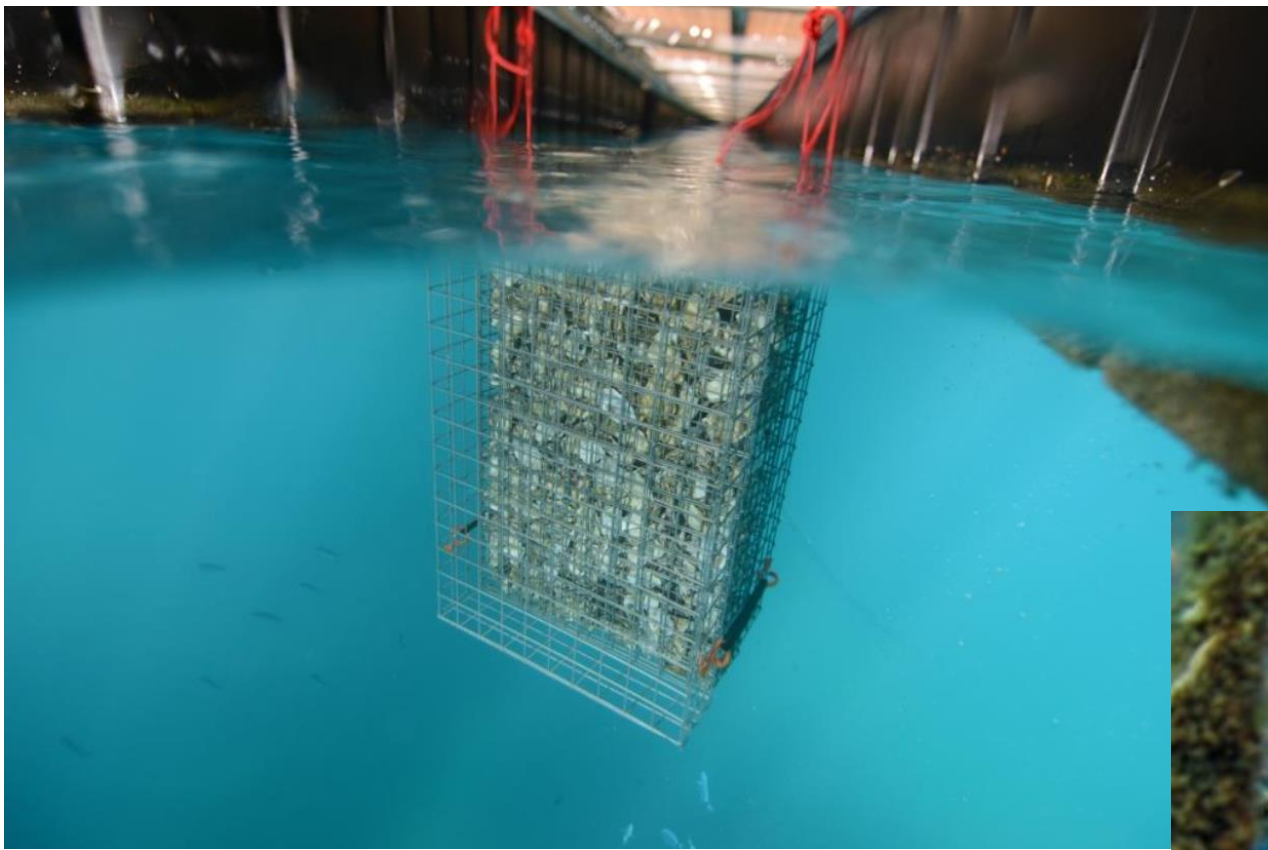
Living Ports

WPSP

iaph 

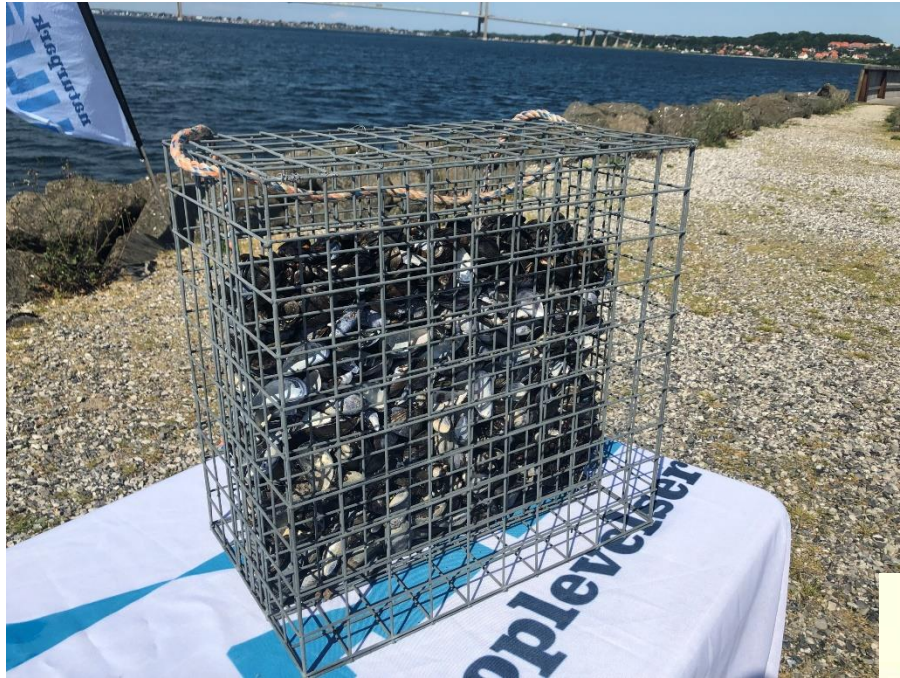
Biohuts – levesteder for fisk





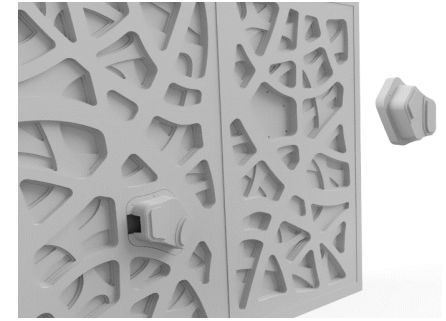
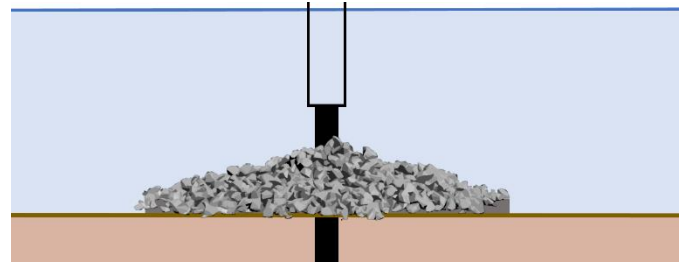
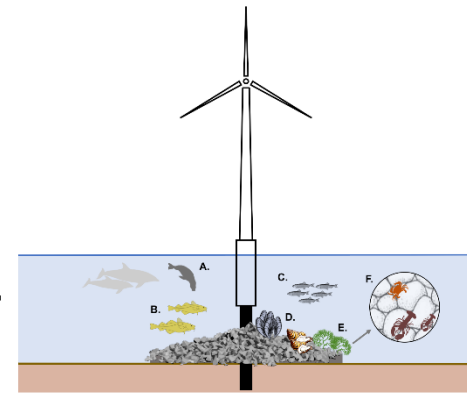


naturpark LILLEBELT

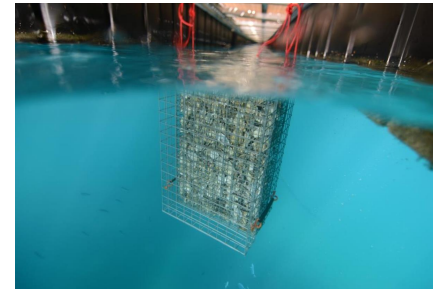


Konklusioner:

1) Havmøller fungerer som kunstige rev og påvirker forekomsten af forskellige arter



2) Havmøller og energi-øer kan formodentligt designes så de fremmer livet i havet



3) Tiltag kan måske bidrage til at fremme rev-funktioner, der er reduceret igennem de seneste 100 år.

